



SOLVENCY AND FINANCIAL CONDITION REPORT

28 FEBRUARY 2022

Contents

Executive Summary	3
1 Business Performance	5
1.1 Business	5
1.2 Underwriting Performance	8
1.3 Investment Performance	11
1.4 Performance of other activities	12
2 System of Governance	13
2.1 General Information	13
2.2 Fit & Proper Requirements	14
2.3 Risk Management System and ORSA	15
2.4 Actuarial Function	16
2.5 Internal Audit Function	17
2.6 Outsourcing	18
2.7 Any other information	19
3 Risk Profile	20
3.1 Underwriting Risk	21
3.2 Market risk	23
3.3 Credit risk	26
3.4 Liquidity risk	27
3.5 Operational risk	29
4 Valuation for solvency purposes	30
4.1 Assets	30
4.2 Valuation of other liabilities	34
4.3 Any other information	35
5 Capital Management	36
5.1 Own Funds	36
5.2 Solvency Capital Requirement and Minimum Capital Requirement	39
5.3 Non-compliance with the MCR and non-compliance with the SCR	42
Appendices	43
Appendix A: Quantitative Reporting Templates	43

Executive Summary

The new, harmonised EU-wide regulatory regime for Insurance Companies, known as Solvency II, came into force with effect from 1 January 2016. The regime requires new reporting and public disclosure arrangements to be put in place by insurers and some of that is required to be published publicly.

This Solvency and Financial Condition Report (SFCR) has been produced by the Electric Bidco Limited Group (the 'Bidco Group' or the 'Group') for the year ended 28 February 2022.

On 8 December 2021, Electric Bidco Limited ('Bidco' or the 'Holding Company') became the parent undertaking of the following separate legal entities:

- Carraig Insurance Company Limited ('CICL', 'Carraig' or the 'Company'):
Carraig is a company licensed and regulated in Gibraltar by the Gibraltar Financial Services Commission. Carraig was established in 2002 and is licensed to underwrite motor insurance, specialising in commercial motor fleet. Since 2002 the Company has underwritten premiums in excess of £200 million in the UK and Ireland.
- Carraig Premium Finance Limited ('CPFL'):
CPFL is the 100% owned subsidiary of CICL.
- Direct Commercial Limited ('DCL'):
DCL is a UK registered company and FCA licensed insurance intermediary. DCL has six subsidiaries, five of which are dormant (Direct Commercial Line Ltd, Haul-In-One Ltd, ARMS Ltd, Waste Line (UK) Ltd and TCM Advisors Ltd) and one that actively trades (Camatics Limited).
- Camatics Limited ('Camatics'):
Camatics provides the cameras that are installed in CICL's policholder's vehicles. This in turn provides driver behaviour reporting, journey data and irrefutable claims evidence (by way of accident footage).

The Group incorporates all of the above named entities.

This Report incorporates consolidated information at the level of the Group and solo information for the insurance subsidiary CICL.

Electric Bidco Limited ('Bidco' or the 'Holding Company') is a Gibraltar registered company. It is a holding company with 100% ownership of both CICL and DCL. Bidco itself does not trade. The results and activities of CICL and DCL are integral to the results of the Group.

The Group has been deemed an 'insurance group' for the purposes of the Solvency II regulatory scheme, the current group structure is such that, as noted above, the activities and income streams of the wider group are driven primarily by CICL and DCL. There is no material impact on the Group's results from the activities of Bidco itself, CPFL, Camatics or the other dormant group entities. The CICL Board perceives no specific or adverse risks arising through either its participation in the Bidco Group or from the activities of its fellow subsidiary DCL.

This report covers the Business and Performance of the Group, its System of Governance, Risk Profile, Valuation for Solvency Purposes and Capital Management. The ultimate Administrative Body that has the responsibility for all of these matters is CICL's Board of Directors, with the help of the Audit, Risk and Compliance Committee and Claims and Underwriting Committee, in addition to various governance and control functions that it has put in place to monitor and manage the business. CICL's Board of Directors are supported in this by the Board members of Bidco.

The Board of Directors and the management team include highly skilled and experienced individuals who oversee the various functions of the business, with carefully selected outsourced service providers, who have developed the specific knowledge of its book of business and its requirements. The Group has outsourced certain operations to its insurance manager, Artex Risk Solutions (Gibraltar) Limited (Artex). In addition other activities such as claims and policy administration is outsourced to DCL, actuarial services are provided by Deloitte Actuarial Services Limited and the

Internal Audit function is provided by PKF Littlejohn LLP. A detailed organisational chart is included within this Report.

The group structure is straightforward and not complex. Day-to-day operational management is outsourced to CICL's insurance manager in Gibraltar, Artex Risk Solutions (Gibraltar) Limited ('Artex'). In addition, the Company outsources policy administration and claims handling to other related entities – namely DCL.

For the financial year ended 28 February 2022, CICL wrote £32.51m (2021: £34.19m) in gross written premiums, of which a small portion related to premiums written within Ireland (£0.7m (2021: £0.93m)). The Company reported an overall, after tax, profit of circa £3.32m (2021: profit of £1.82m). The Company's Own Funds under Solvency II, as at 28 February 2022, amounted to £15.74m (2021: £12.58m), exceeding the SCR by £6.54m (2021: £3.76m). The business plan forecasts that Own Funds will continue to increase, through delivering a profitable underwriting result. The Board confirms that as at 28 February 2022 the Company's solvency coverage was 171% (2021: 141%).

For the financial period ended 28 February 2022, the Group reported an overall, before tax, profit of circa £13.66m. The Group's Own Funds under Solvency II, as at 28 February 2022, amounted to £31.78m – exceeding the Group SCR by £18.69m. The Group business plan forecasts that Own Funds will continue to increase, through delivering profit in both CICL and DCL. CICL's Board confirms that as at 28 February 2022 the Group's solvency coverage was 243%.

The Group's and CICL's business plans forecast that Own Funds will continue to exceed its respective solvency capital requirement over the three-year planning period to the end of February 2025.

1 Business Performance

1.1 Business

1.1.1 *Legal form of undertaking*

Parent:

Electric Bidco Limited ('Bidco' or the 'Holding Company')

The Holding Company's registered address is as follows:

First Floor, Grand Ocean Village

Ocean Village

Gibraltar

GX11 1AA

Subsidiary:

Carraig Insurance Company Limited ('CICL', 'Carraig' or the 'Company':)

CICL is a company limited by shares and incorporated in Gibraltar (83660). The Company's registered address is as follows:

First Floor, Grand Ocean Village

Ocean Village

Gibraltar

GX11 1AA

This SFCR covers both Bidco and CICL on a group basis. The Bidco Group is an insurance group for Solvency II purposes.

1.1.2 *Supervisory Authority*

The Company is regulated by the Gibraltar Financial Services Commission ('GFSC').

PO Box 940

Suite 3, Ground Floor

Atlantic Suites

Europort Avenue

Gibraltar

GX11 1AA

[+350 200 40283](tel:+35020040283)

1.1.3 *Independent Auditors*

The Company's auditors for the financial year ended 28 February 2022 were:

PricewaterhouseCoopers Limited

327 Main Street

Gibraltar

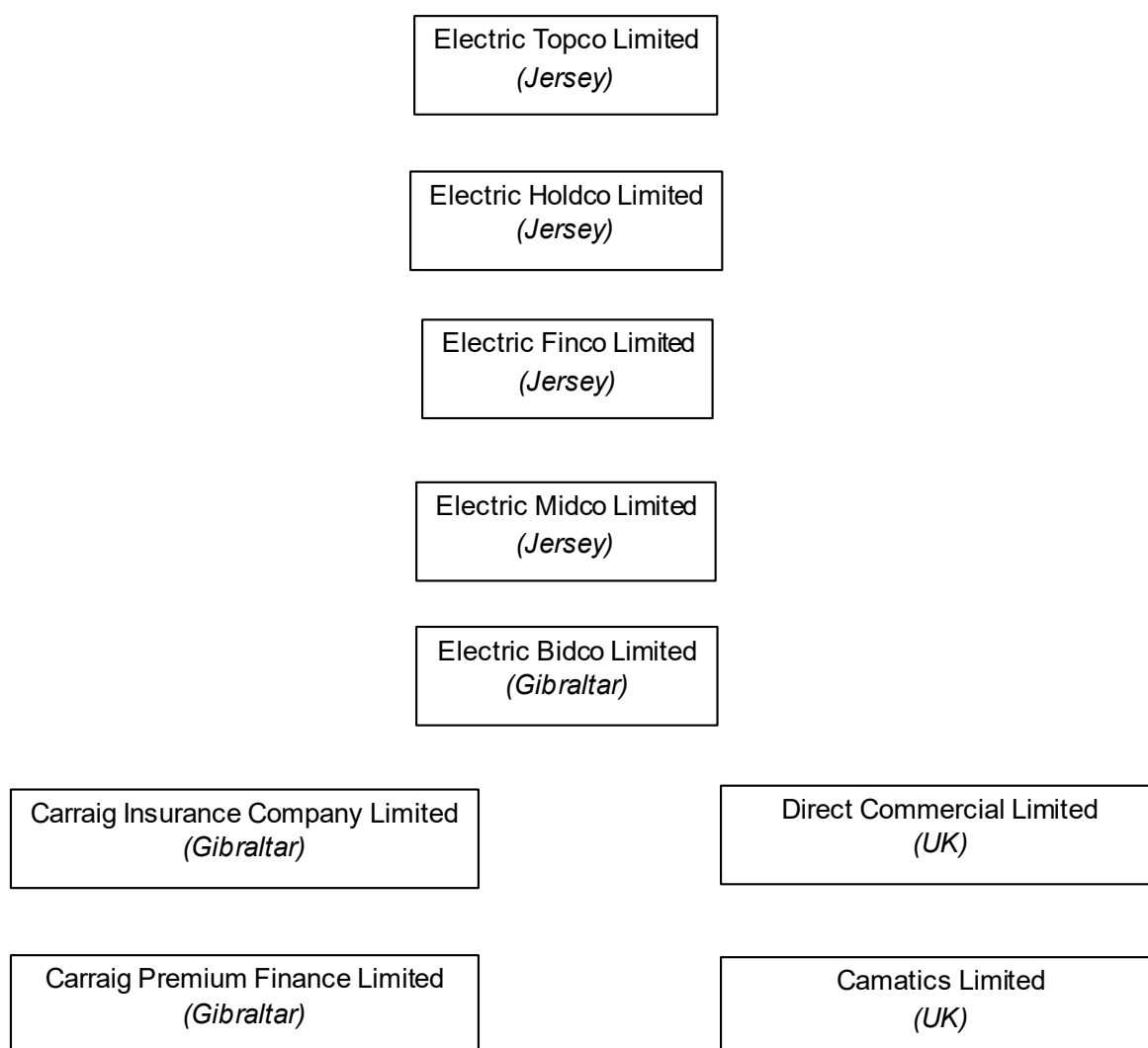
GX11 1AA

1.1.4 *Ultimate Shareholders*

As at 28 February 2022, CICL is a 100% subsidiary of Bidco.

Bidco in turn is ultimately owned 100% by Electric Topco Limited – a Jersey registered company.

1.1.5 Group Structure



1.1.6 Board of Directors

The Directors who served during the year were:

Bidco:

As at 28 February 2022, the composition of the Bidco Board is shown below:

- Matt Hutchinson, Director
- Richard Thompson, Director
- Phil Cunningham, proposed Director
- Liam Guilfoyle, proposed Director

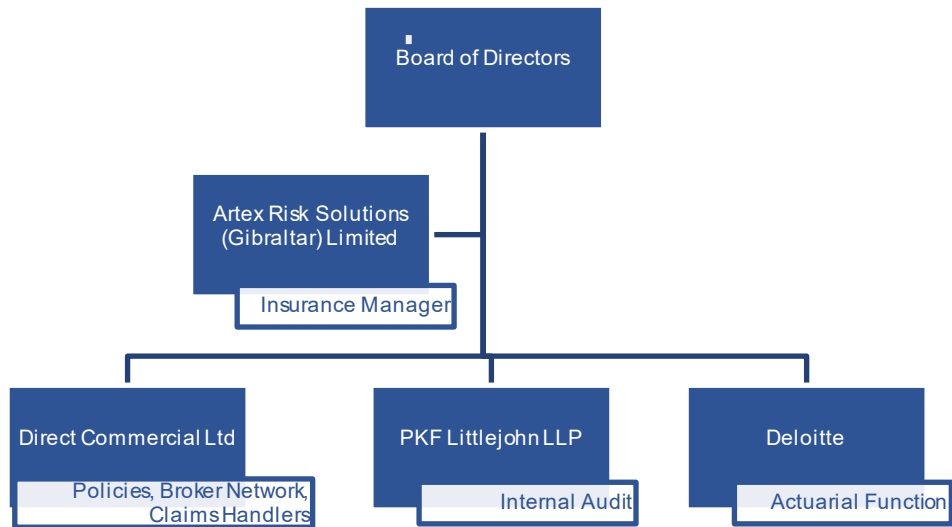
CICL:

As at 28 February 2022, the composition of the CICL Board is shown below:

- Philip Cunningham
- Liam Guilfoyle
- Chris Webb
- Colin Peters
- Colin Tattersall

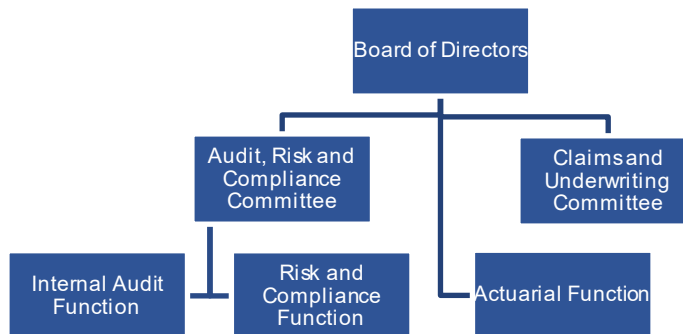
1.1.7 Management Structure, outsourcing and advisory partners

CICL level:



1.1.8 Key Functions

CICL level:



1.2 Underwriting Performance

The Group writes its business through its broker network and has sourced capacity to write both direct and in-direct business with its re-insurance partners. All business is written in the UK. The Group mitigates its risk through a mixture of Quota Share reinsurance and Excess of Loss reinsurance. This provides protection both against adverse performance from attritional losses and from large claims.

The majority of the portfolio of business written is made up of Haulage, with the Group offering a 'Treble 20' product (comprising of a three-year successive annual policy with binding renewal agreements), 'Haul-in-One' (an online offering) and 'Camatics' (which was developed by DCL). These are tools that allow the Group to differentiate itself from its competitors.

The Group prepares its financial statements in accordance with Generally Accepted Accounting Principles in Gibraltar (GAAP) and the underwriting performance information given in this section is therefore on a GAAP basis.

The following tables summarises the GAAP performance of the Group and Company for the period/year ended 28 February 2022 (with comparatives at a Company level for 2021).

Group:

For the period ended 28 February 2022, the Group's results are as presented below:

TECHNICAL ACCOUNT

	28-Feb-22
	£'000
Earned premiums net of reinsurance	
Gross premiums written	32,506
Outward Reinsurance Premium	(11,741)
Net Premiums Written	20,765
Earned premiums net of reinsurance	20,025
Other technical income	1,588
Claims incurred net of reinsurance	(10,244)
Other technical expenses	(8,639)
Balance in the technical account	2,730
Investment income	64
Other income	25,500
Other charges	(14,638)
Profit before tax	13,656

Company:

For the year ended 28 February 2022, CICL wrote £32.51m (2021: £34.19m), of which £20.76m (2021: £19.11m) was retained business.

The table below illustrates the overall technical profit.

TECHNICAL ACCOUNT

	28-Feb-22	29-Feb-21
	£'000	£'000
Earned premiums net of reinsurance		
Gross premiums written	32,506	34,190
Outward Reinsurance Premium	(11,741)	(14,851)
Net Premiums Written	20,765	19,339
Earned premiums net of reinsurance	20,025	14,809
Other technical income	1,588	2,322
Claims incurred net of reinsurance	(10,244)	(7,743)
Other technical expenses	(8,639)	(8,116)
Balance in the technical account	2,730	1,271

The underwriting profit for the year ended 28 February 2022 was £2.73m (2021: profit of £1.27m). During the year the Company maintained its retained share of premiums underwritten at 20% (2021: 20%) and the commission arrangement with DCL continues to be on a sliding scale basis in line with other capacity providers. CICL's Board confirms that the stability and low variability of the book of business will help to ensure its underwriting profitability into the future, coupled with maintaining the retained share of the underwriting performance at 20% for the financial year ending 28 February 2023.

1.3 Investment Performance

The Group operates a generally risk-averse investment policy, investing in a diversified portfolio made up of cash held at bank, investment property and investment in its subsidiary.

As at 28 February 2022, the Groups's investment portfolio and its yield was made up as follows:

	as at 28 February 2022	
	Value	Yield
	£'000	£'000
Cash & Cash Equivalents	13,832	370
Land & Buildings	4,902	405
Total	18,734	1,388

The Company operates a generally risk-averse investment policy, investing in a diversified portfolio made up of cash held at bank, investment property and investment in its subsidiary.

As at 28 February 2022, the Company's investment portfolio and its yield was made up as follows:

	as at 28 February 2022		as at 28 February 2021	
	Value	Yield	Value	Yield
	£'000	£'000	£'000	£'000
Cash & Cash Equivalents	6,287	370	5,994	206
Land & Buildings	4,844	405	4,655	405
Subsidiary	502	613	502	792
Total	11,420	1,388	11,205	1,403

The Company does not invest in any equities, corporate bonds, government bonds, derivatives or securitisations.

1.4 Performance of other activities

Under the current reinsurance agreements, the Company receives profit commission. The amount allows for expenses and the cedant's share of profit after these expenses are accounted for.

The profit commission for the year was as follows:

Group and Company:

	28 February 2022	28 February 2021
	£'000	£'000
Profit Commission	1,588	2,322
Total	1,588	2,322

2 System of Governance

2.1 General Information

It is the responsibility of the Board to ensure that both the Company and the Group complies with Pillar II of the Solvency II regulations. Wherever possible, and where regulations allow, proportionality has been taken into consideration when establishing the relevant functions. The Company's Board is supported by two sub-Committees – the Audit, Risk and Compliance Committee and the Claims and Underwriting Committee. Responsibility for compliance with Pillar II of the Solvency II regime is the responsibility of the Audit, Risk and Compliance Committee. Key function holders oversee the vital activities of the Company.

2.1.1 *The structure of the Board of Directors (BoD)*

Bidco:

As at 28 February 2022, the composition of the Bidco Board is shown below:

- Matt Hutchinson, Director
- Richard Thompson, Director
- Phil Cunningham, proposed Director
- Liam Guilfoyle, proposed Director

CICL:

As at 28 February 2022, the composition of the CICL Board is shown below:

- Phil Cunningham
- Liam Guilfoyle
- Chris Webb
- Colin Peters
- Colin Tattersall

2.1.2 *The structure of the Audit, Risk and Compliance Committee (ARC)*

As at 28 February 2022, the composition of CICL's ARC is shown below:

- Liam Guilfoyle
- Colin Peters
- Colin Tattersall
- Morgan Peters

2.1.3 *The structure of the Claims and Underwriting Committee (CUW)*

As at 28 February 2022, the composition of CICL's CUW is shown below:

- Phil Cunningham
- Liam Guilfoyle
- Chris Webb
- Carl Cripps
- Marcus Hayday
- Hugh Richards

Members of the Board and sub-Committees adhere to agreed Terms of Reference and attend regular meetings. The Board and Committee Members review agendas, papers, and related materials, sufficiently in advance of these meetings to enable them to participate in an effective manner. At least four Board, ARC and CUW meetings are held throughout the calendar year, with the members in regular contact throughout the day to day management of the Company.

2.2 Fit & Proper Requirements

The Group has a fit and proper policy in place in accordance with the requirements of the GFSC's Guidance Note 14. The policy focuses on honesty, integrity, reputation, competence, capability and financial soundness of key individuals.

Persons who effectively run the Company or are Key Function Holders, including members of the Board and sub-Committees, should be 'fit and proper'. The Company takes account of the respective duties allocated to individual persons in order to ensure appropriate diversity of qualifications, knowledge and relevant experience so that the Company is managed and overseen in a professional manner.

The Company ensures that the members of the Board and sub-Committees collectively possess qualifications, experience and knowledge about at least: insurance and financial markets; business strategy and business model; system of governance; financial and actuarial analysis; and regulatory framework and requirements. When assessing whether a person is 'proper', an assessment of that person's honesty and financial soundness based on relevant evidence regarding their character, personal behaviour and business conduct is performed.

2.3 Risk Management System and ORSA

The Company has developed and implemented a risk and compliance policy, which adheres to the expected requirements of Solvency II. This policy intends to identify and manage all material risks, allowing management to minimise any significant risks to the Group's business. The Board of CICL, through its ARC Committee, retains full responsibility for the Risk Management function.

The Group's risk management and compliance objectives are as follows:

- To effectively monitor, register and review the Group and Company's risk on an annual basis.
- To advise the Board on a quarterly basis, or as significant incidents occur, on the status of the Group and Company's risks and the potential exposures.
- To evaluate the Group and Company's risk appetite and overall risk tolerance limits and continuously review its risk strategies.
- To prepare, in accordance with Article 45 of the Solvency II Directive, the Group's Own Risk & Solvency Assessment (ORSA) on an annual basis.
- To prepare and ensure the Boards of both Bidco and CICL take an active role in the Group's ORSA as required by Solvency II, and establish a policy to ensure the continuous assessment of the Group's ORSA.
- To effectively monitor compliance with the GFSC and comply with local legislation.
- To review practice notes and newsletters issued by the GFSC, with regard to Solvency II developments.
- To report to the Board of CICL and make recommendations on the required steps to be taken on matters which require action or improvement and promote a risk awareness culture within the Company.

The methodology for achieving the policy objectives are as follows:

- **Risk strategy** - The Company's Board is required to develop and continue to enhance its risk management process. The ARC Committee reviews the Company's strategic objectives and establishes the Company's risk appetite and risk tolerance in accordance with both the Group and Company's operational, medium term and strategic goals and ensures that risk mitigation techniques are put into place.
- **Risk Appetite** - The Company conducts stress and scenario testing (on the most punitive basis – solo or group) and reviews the outcomes. This provides guidance to the Company's Board in order to understand the potential resultant impacts on both the Group and Company's capital adequacy.
- **Risk Profile** - The Company's Board, through the ARC Committee, on an ongoing basis considers the Group and Company's risk profile. This is an ongoing process involving the identification, evaluation and quantification of the Group's material risks, both current and future.

The Company's Risk Register is discussed and considered for potential risks to the business. Risks are identified and assessed with its inherent and residual results.

Risk management is the responsibility of the ARC Committee and the Company's key outsourced service providers. The ORSA is an integral exercise performed annually which assists the Company's Board with its effective business planning. The ORSA is carried out with input from various management members across the business, allowing for past performance and business planning over a three-year horizon to be considered. All material risks faced by the Group are assessed and possible mitigating actions are considered. The Board is therefore able to assess the level of capital required and make informative business decisions with risk awareness.

2.4 Actuarial Function

The Actuarial Function is overseen by the Company's Actuarial Function Holder and ultimately the Board, with the activity being outsourced to an independent firm of qualified external actuaries in accordance with its signed terms of engagement. The Company's actuaries provide expertise and act as a service provider in relation to all activities falling within the remit of the Actuarial Function. The Actuarial Function is a critical operational function within Article 49 of the Solvency II directive.

The Group's actuaries, with oversight from the Function Holder and ultimately the Board, are responsible for all the duties of the Actuarial Function as follows:

- Co-ordination and calculation of technical provisions
- Ensuring the appropriateness of methodologies and underlying models used
- Reviewing of best estimates against actual performance
- The calculation of technical provisions is currently being prepared on a bi-annual basis
- Contributing to the overall risk management system, with respect to risk modelling and calculation of capital requirements and Group ORSA reporting
- Performing calculations for SCR & MCR – at both solo entity and group level
- Carrying out investigations in relation to claims experience
- Issuing opinions on underwriting policies and reinsurance arrangements
- Preparation of Pillar III reports

The Group's actuaries provide guidance and expertise and further assistance to enhance its risk management framework. The service focuses on all critical steps of the framework.

As part of the Group ORSA, the Actuarial Function contributes to the assessment of compliance with the requirements focusing on technical provisions and analysing deviations of the Group's risk profile from the assumptions underlying the calculation of the SCR with the Standard Formula.

2.5 Internal Audit Function

The Internal Audit Function is overseen by the Function Holder, the ARC Committee, and ultimately the Board. The appointed Function Holder, provides the required independency and objectivity to the Function. Proportionality has been taken into account when implementing the Company's overall audit policy.

The following Internal Audit objectives were established by the Company's Board:

- To ensure an independent and impartial Internal Audit Function.
- To effectively monitor the internal controls commensurate to the risks imposed to the Company and ensuring all personnel are aware of their role in the internal control system.
- Keep under review the effectiveness of the Company's internal controls and risk management systems and review and approve the statement to be included in the RSR and SFCR on these matters
- Establish, implement and maintain an audit plan setting out the audit work to be undertaken in the following year, considering all activities and the complete system of governance of the Company.
- Ensure a risk based approach when deciding internal audit priorities, with feedback and consultation from the Audit, Risk and Compliance Committee.
- Issue and submit an Internal Audit report to the Company's Board, at least on an annual basis, based on the results of the work carried out in accordance with the findings and recommendations of the key areas of the business reviewed.

PKF are the appointed Internal Auditor and a 3 year plan has been put in place to ensure that all areas of relevant risk are reviewed by the Internal Audit Function.

2.6 Outsourcing

Although the Group outsources various key activities of the business, all major decisions and ultimate responsibility is still retained by the Company's Board, with a member of the Company's Board overseeing the activities performed at each of these service providers.

The criteria and due diligence for outsourcing activities to service providers have been strict and contractual agreements have been put into place.

2.7 Any other information

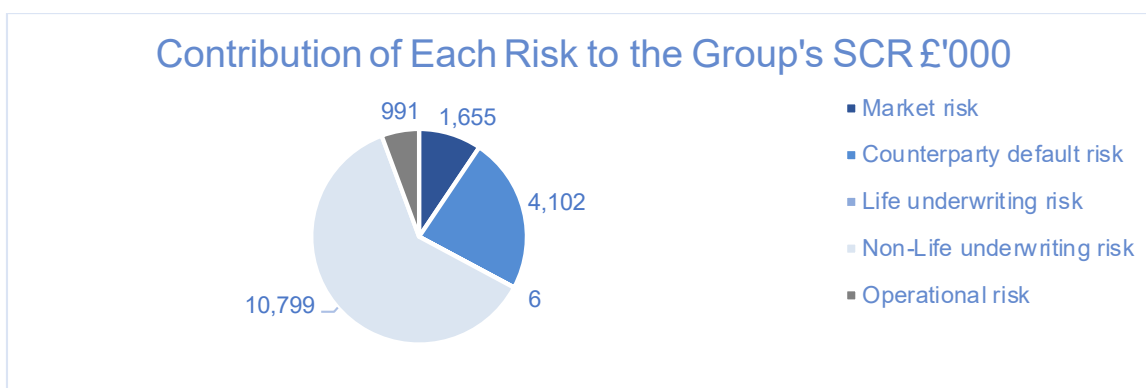
Due to the nature, size and complexity of the Group, the Company's Board have had to consider and apply proportional measures when implementing Solvency II and ensuring continuous compliance with all the aspects of Pillar II for corporate governance. The Company's Board feel that the Company developed and embedded the Solvency II culture within all areas of the business and that the Company's shareholders and policyholders are sufficiently protected against risk.

3 Risk Profile

The Group believes that a robust and effective risk management framework is crucial to maintaining successful business operations and delivering sustainable, long-term profitability. Quantifiable risks are assessed through the 99.5% Value at Risk, as measured with the Solvency II Standard Formula (SCR). Both the Group and the Company aim to hold sufficient capital at all times to protect itself from losses occurring due to such risks. Non-quantifiable risks are measured through qualitative analyses and a frequency/severity approach.

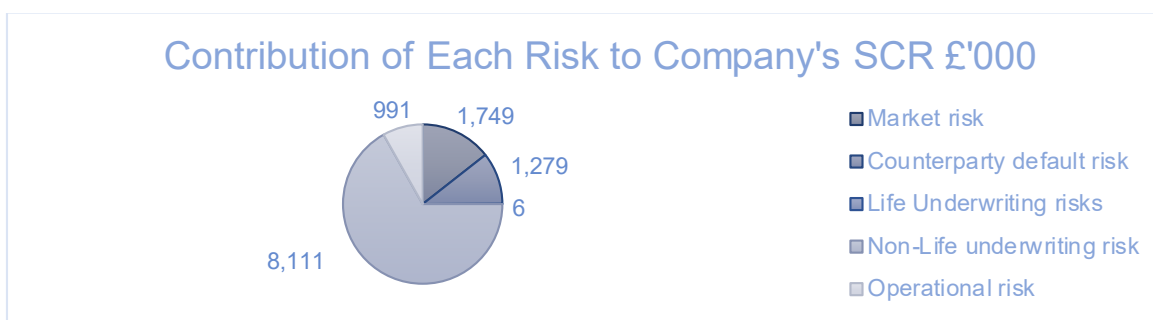
In addition to capital, the Group manages all risks through its processes and procedures and its internal control framework and by monitoring exposures and benchmarking those against its risk appetite.

The various components of the Group's SCR are shown in the illustration below:



The Group's risk profile is mainly driven by its underwriting activities. Non-life Underwriting risk forms around 61% of the total risk portfolio of the Company. The second largest exposure (23% of undiversified SCR) arises from Counterparty risk and the third (9% of undiversified SCR) from Market risk.

The various components of the Company's SCR are shown in the illustration below:



The Company's risk profile is mainly driven by its underwriting activities. Non-life Underwriting risk forms around 67% of the total risk portfolio of the Company. The second largest exposure (14% of undiversified SCR) arises from Market risk and the third (11% of undiversified SCR) from Counterparty risk.

The risk profile of both the Group and the Company as at 28 February 2022 was in line with its risk strategy.

3.1 Underwriting Risk

3.1.1 Overview of any material risk

Underwriting risk is defined as the risk of loss, or adverse change in the value of insurance liabilities, due to inadequate pricing and/or reserving practices. Underwriting risk may be caused by the fluctuations in timing, frequency and severity of insured events and claim settlements in comparison to the expectations at the time of underwriting.

The Group controls and monitors its underwriting risk by ensuring that:

- reasonable and effective controls are in place to support the risk selection and underwriting process;
- the Group's reinsurance programme provides secure coverage, appropriate to the Group/Company's strategy, level of capital and risk profile;
- the risks arising out of reinsurance as a risk mitigation technique are properly understood, addressed and monitored;
- claims are managed fairly and recorded properly in line with reinsurance agreements and all amounts recoverable from reinsurers are duly collected;
- a consistent methodology for the calculation of, and the accounting for, outstanding loss reserves (OSLR) and incurred but not reported reserves (IBNR) is maintained.

3.1.2 Risk Assessment/Measurement

The Group measures its Underwriting risk primarily using the Standard Formula, the adequacy of which was assessed during the latest Group ORSA. The measurement addresses four sources of risk; Premium and Reserve Risk, Lapse Risk and Catastrophe risk. These exposures are assessed by calculating the impact on the Own Funds when allowing in the projections for a number of risk events.

The results of the Non-life Underwriting risk assessment of the Group as described above are summarised below:

Risk - 99.5% Value at Risk £'000	Feb-22
Premium and reserve risk	10,445
Lapse risk	1,106
Non-life CAT risk	1,010
Diversification effects	(1,762)
Non-Life underwriting risk	10,799

The results of the Non-life Underwriting risk assessment of the Company as described above are summarised below:

Risk - 99.5% Value at Risk £'000	Feb-22	Feb-21
Premium and reserve risk	7,912	7,151
Lapse risk	1,106	989
Non-life CAT risk	447	447
Diversification effects	(1,354)	(1,244)
Non-Life underwriting risk	8,111	7,343

The Group is also exposed to Life-Underwriting risk due to the longevity risk attached to its claims that have been settled as Periodical Payments Orders ("PPOs"). A significant part of this risk is mitigated through its reinsurance arrangements; hence the residual risk is low, amounting to £6k (as at both 28 February 2022 and 28 February 2021).

3.1.3 Risk Concentration

No material risk concentrations have been identified. This is because of:

- The Group's geographically diversified insurance portfolio.

- Reinsurance, as the Group manages its exposure to any one risk and to catastrophic events using reinsurance. Thus, the loss to the Company is generally limited to its retention.

No future risk concentrations are anticipated over the business planning period.

3.1.4 Risk Mitigation

Reinsurance

The Group uses reinsurance to protect against claims volatility. Proportional and non-proportional reinsurance arrangements are in place. The Actuarial Function also issues an opinion on the adequacy of reinsurance arrangements annually. The credit rating and the financial condition of the key reinsurance counterparties are reviewed, so that corrective action is taken in the event of deterioration in their financial quality.

The effectiveness of the current reinsurance structure as well as that of potential reinsurance agreements considered are also assessed in the Group ORSA with respect to their impact on profitability and solvency coverage ratio over the business planning horizon.

Use of reinsurance protection, enables the Group to manage and optimise its underwriting portfolio, whilst protecting its balance sheet and maintaining its exposure to the risk limits set by the Company's Board of Directors. The steps taken to ensure that both the reinsurance structure and the reinsurance counterparties are appropriate, have enabled the Group to remain profitable with little volatility in its financial results.

Portfolio Monitoring

The senior management team of the Group receives and reviews:

- Regular reports on the gross written premium, risks written, claims and reserves; and
- Regular detailed profitability analyses and reviews.

The senior management team of the Group undertakes the reviews above to ensure that the Group is protected against the risk of inadequate pricing. The frequency of the reviews will enable the management to take quick action to resolve any issues identified.

The continued effectiveness of the risk mitigation techniques and controls described above is monitored continuously by the Senior Management. In the event of any findings or shortcomings identified, quick action is taken and the risk mitigation techniques are adjusted accordingly.

The Group will continue to use the risk mitigation techniques mentioned above, continuously aiming at enhancing them to reduce risk. The Group does not plan to enter or purchase any additional risk mitigation products over the planning period.

3.1.5 Risk Sensitivity

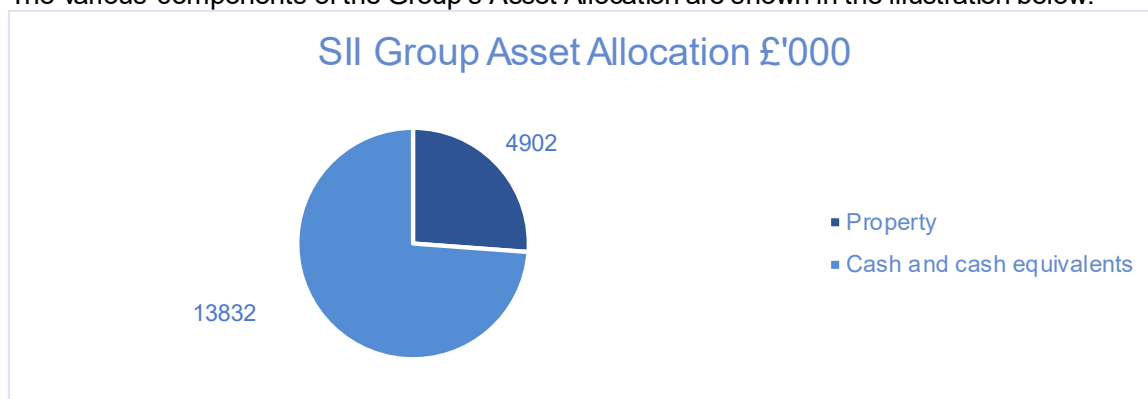
As part of the business and capital planning processes, the risk management function carries out stress tests, including the assessment of alternative scenarios to feed into the Group ORSA. This ensures that potential adverse scenarios are considered and negative outcomes can be adequately mitigated through controls implemented, through timely remedial actions or through the commitment of additional capital.

The Group assesses the results of the stress scenarios and ensures that its risk exposures are in line with its strategy and that adequate process and controls are in place to ensure that such risk exposures are identified, measured, mitigated where necessary and reported.

3.2 Market risk

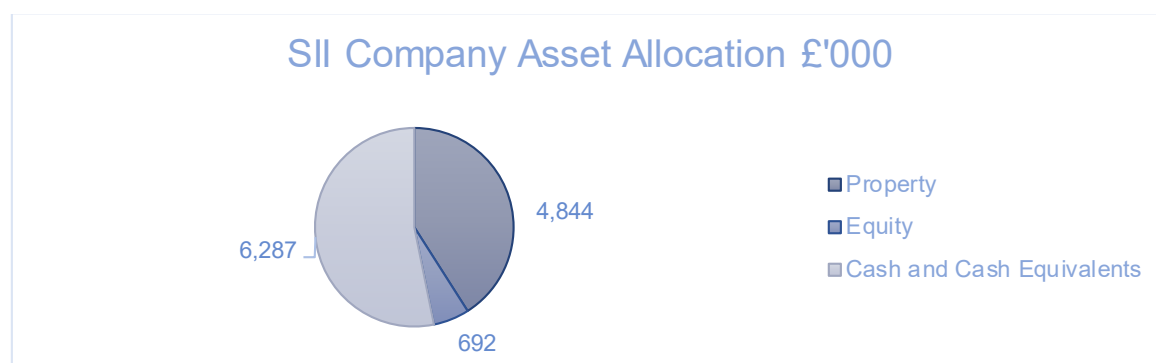
The Group is exposed to Market (Investment) risk through its asset portfolio and from the level or volatility of market prices of financial instruments which have an impact upon the value of the assets of the Group.

The various components of the Group's Asset Allocation are shown in the illustration below:



As at 28 February 2022, the Group's investment assets include property and cash and current accounts.

The various components of the Company's Asset Allocation are shown in the illustration below:



As at 28 February 2022, the Company's investment assets include property, equity (in the form of investments in subsidiaries), cash and current accounts.

Current accounts are subject to credit and liquidity risk which are dealt with in the respective sections below.

Market risk arises in the following forms, both on the asset and on the liability side, as the value of technical provisions depends on market conditions:

- **Interest rate risk:** the sensitivity of the value of assets, liabilities and financial instruments to changes in the term structure of interest rates, or in the volatility of interest rates
- **Equity risk:** the sensitivity of the values of assets, liabilities and financial instruments to changes in the level or in the volatility of market prices of equities
- **Property risk:** the sensitivity of the values of assets, liabilities and financial instruments to changes in the level or in the volatility of market prices of real estate

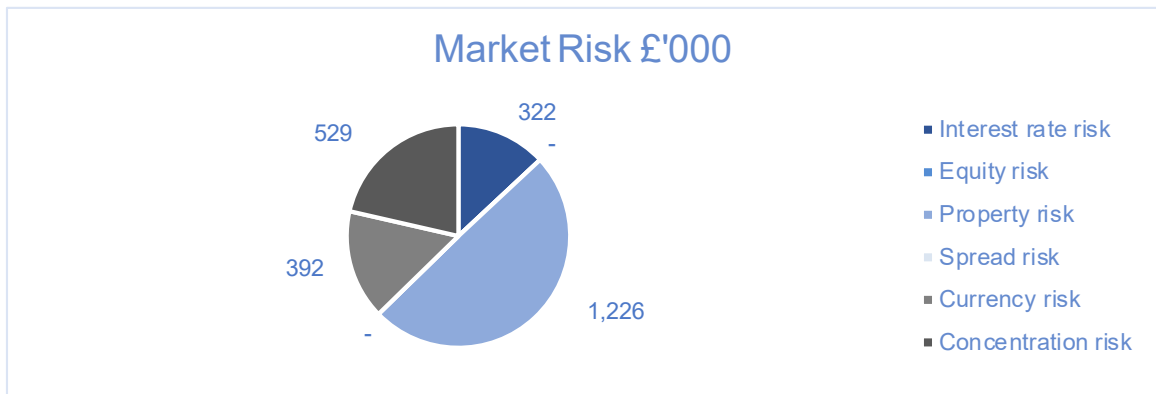
3.2.1 Risk Assessment/Measurement

The Group measures its Market risk using the Standard Formula, the adequacy of which was assessed during the latest Group ORSA. The measurement is done separately for the sub-categories mentioned above. The aggregate market risk measure allows for diversification between its components.

The Group also adopts other risk assessment tools such as stress and scenario testing (both on the current position and over the business planning horizon), maintenance of a Risk Register, comparison of actual exposure and risk tolerance limits and use of Key Risk Indicators.

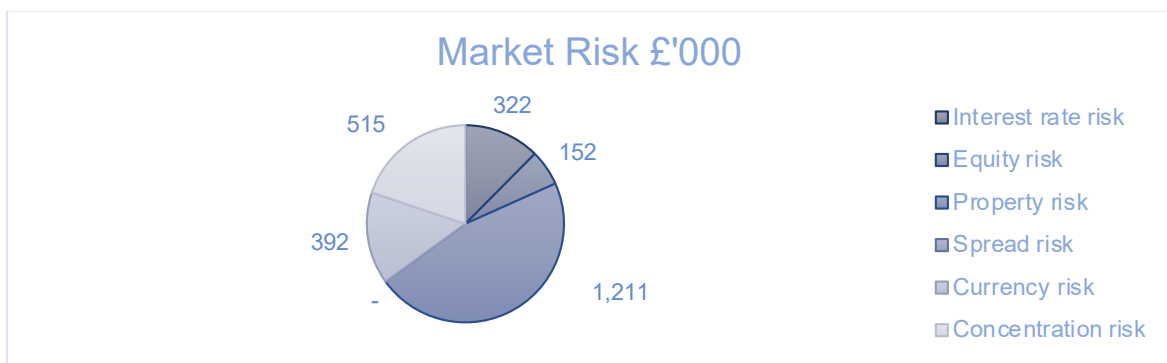
With the support of the RMF, the Group assesses the impact of any material investment decisions on its SCR coverage.

The various components of the Company's Market risk charge are shown in the illustration below:



As at 28 February 2022, the Group's investment assets include property and cash and current accounts.

The various components of the Company's Asset Allocation are shown in the illustration below:



The primary sources of market risk are property, currency and concentration risks, arising from exposures to investments in real estate, cash deposits and equities (in the form of investments in subsidiaries).

Interest Rate Risk

The total assets and liabilities that are sensitive to changes in the interest rates are as follows:

	£'000
Assets	0
Liabilities	20,292

As at 28 February 2022 the 99.5% Value at Risk for interest rate risk was £322k. Due to the relatively short-term nature of assets and liabilities of both the Group and the Company the interest rate risk is not considered to be material risk.

Equity Risk

The total Equity portfolio of the Company as at 28 February 2022 was £692k and the total SCR for Equity risk at the Company level on the same date was £152k.

Property Risk

The Group has a significant portion of its asset portfolio invested in property. The composition of the property portfolio is as follows:

- The total property portfolio of the Group as at 28 February 2022 was £4.90m and the total SCR for property risk on the same date was £1.23m.
- The total property portfolio of the Company as at 28 February 2022 was £4.84m and the total SCR for property risk on the same date was £1.21m.

Currency Risk

The total Net exposure of both the Group and the Company to foreign currency as at 28 February 2022 was £1.57m and the total SCR for currency risk on the same date was £392k.

Risk Concentration

One of the main market risk sub-modules of the Group is Concentration Risk. The Group's portfolio is concentrated to property investment which yields to a concentration risk of £529k. The Company's portfolio is also concentrated to property investment which yields to a concentration risk of £515k.

3.2.2 Risk Mitigation

Market risk is mitigated through the continued review and monitoring of the Group's investment exposures.

The Group does not plan to enter or purchase any additional market risk mitigation products over the planning period.

3.2.3 Prudent Person Principle

The Solvency II regulations require investment of assets in accordance to the "Prudent Person Principle".

The Group regularly reviews the financial condition of its investment counterparties and ensures that the currency, nature and duration of assets is appropriate to the characteristics of its liabilities, avoiding excessive reliance on any one counterparty, asset class or geographical location. The Group has not invested in derivatives or other inadmissible financial instruments.

3.2.4 Risk Sensitivity

Stress tests and scenario analyses

As part of the business and capital planning processes, the Risk Management function carries out stress tests including the assessment of alternative scenarios to feed into the Group ORSA. This ensures that potential adverse scenarios are considered and negative outcomes can be adequately mitigated through controls implemented, through timely remedial actions or through the commitment of additional capital.

The Company assesses the results of the stress scenarios and ensures that its risk exposures are in line with its strategy and that adequate process and controls are in place to ensure that such risk exposures are identified, measured, mitigated where necessary and reported.

3.3 Credit risk

Credit risk refers to the risk of loss or of adverse change in the financial situation, resulting from fluctuations in the credit standing of counterparties. The Company is exposed to credit risk rising from the following exposures:

- Cash at bank
- Reinsurance recoverables
- Premium receivables

3.3.1 Risk Assessment/Measurement

The Group measures its credit risk using the Standard Formula, the adequacy of which was assessed during the latest Group ORSA. With respect to exposures to banks, bond issuers, loan holders and reinsurers the assessment depends highly on the credit rating of the counterparties which defines the probability of default. On the other hand, for premium receivables, the assessment is based on how long overdue these are and the probability of default is determined based on that.

Credit risk forms 23% and 11% of the total undiversified SCR at Group and Company level respectively.

Credit risk is not expected to change materially over the business planning horizon.

3.3.2 Risk Concentration

The Group is not anticipating that the credit risk will change materially over the planning period.

3.3.3 Risk Mitigation

The credit rating and the financial condition of all key counterparties are reviewed at least quarterly and management is ready to take action in the event of deterioration in the credit quality.

The Group does not plan to enter or purchase any additional credit risk mitigation products over the planning period.

3.3.4 Risk Sensitivity

As part of the business and capital planning processes, the Risk Management Function carries out stress tests including the assessment of alternative scenarios to feed into the Group ORSA. This ensures that potential adverse scenarios are considered and negative outcomes can be adequately mitigated through controls implemented, through timely remedial actions or through the commitment of additional capital.

The Group assesses the results of the stress scenarios and ensures that its risk exposures are in line with its strategy and that adequate process and controls are in place to ensure that such risk exposures are identified, measured, mitigated where necessary and reported.

3.4 Liquidity risk

Liquidity risk is defined as the risk that the Group is unable to realise investments and other assets (or realise them at excessive cost) to settle its financial obligations when they fall due.

The liquidity risk of the Group is generally low as:

- A significant proportion of the assets are invested in short-term products including cash. However, at the Company level, some unlisted equities are held which does increase slightly the liquidity risk.
- Nonetheless, most of the assets held are highly tradeable which enables fast and low-cost liquidation of assets.

The composition of the asset portfolio is expected to change over the business planning horizon, by replacing a proportion of property investments with current accounts. This would further reduce liquidity risk.

3.4.1 Risk Assessment/Measurement

The Group's liquidity requirements are assessed regularly to meet the Group's stated liquidity objectives.

3.4.2 Risk Concentration

Sources of cash in and cash out flows such as insurance premiums, claims expenses etc., are diversified and to a large extent independent. This risk concentration within liquidity risk is limited.

The Group does not anticipate deterioration in its liquidity position or risk during the business planning period.

3.4.3 Risk Mitigation

The Group also minimises liquidity risk by:

- ensuring that the Accounting function designs and implements proper controls, documented in the procedure manual, to ensure that inflows are actively managed, monitored and followed up; ensuring that income generated from the investment portfolio is duly received by the Group;
- catering for unexpected cash flows, since the quota for highly liquid assets provides a good buffer over and above the maximum historic cash outflows;
- considering the effect of any proposed new business on liquidity and liquidity risk at respective Board level;
- closely monitoring the timing of claims payments and reinsurance recoveries.

The Group does not deem necessary the adoption of any risk mitigation techniques given the low level of its liquidity risk.

3.4.4 Expected profit included in future premiums

As at the reference date, there are no future premiums cash-flows within the contract boundaries of unexpired policies and therefore there is no expected profit included for future premiums.

The contract boundaries are defined as:

- the future date where the insurance or reinsurance undertaking has a unilateral right to terminate the contract; or
- the future date where the insurance or reinsurance undertaking has a unilateral right to reject premiums payable under the contract; or

- the future date where the insurance or reinsurance undertaking has a unilateral right to amend the premiums or the benefits payable under the contract in such a way that the premiums fully reflect the risks.

3.5 Operational risk

Operational risk refers to the risk of loss arising from inadequate or failed internal processes, people, systems, or from external events. This risk encompasses all exposures faced by the Group's functions while conducting the Group's business, including but not limited to, accounting and financial reporting, business continuity, claims management, information technology and data processing, legal and regulatory compliance, outsourcing and reinsurance. The Group has the exposure to the following types of operational risk:

Business Disruption & Systems Failure	Interruption of business activity due to system or communication failures
Financial Integrity & Reporting	Disclosure of materially incorrect or untimely information
External Fraud	Acts intended to defraud, misappropriate property or circumvent the law by an external party
Internal Fraud	Acts intended to defraud, misappropriate property or circumvent the law by an internal party
Process Risks	Failure to execute or process transactions timely and accurately with clients and other counterparties
Clients, Products and Business Practices	Lack of productivity and poor customer service

3.5.1 Risk Assessment/Measurement

The Group commits capital as a buffer to absorb losses due to operational risks as measured through the Standard Formula.

3.5.2 Risk Concentration

Currently there are no material operational risk concentrations.

The operational risk profile of the Group is not expected to change over the business planning period.

3.5.3 Risk Mitigation

The Group addresses its operational risk through the following:

- an internal control system is in place
- a business continuity plan is in place to ensure continuity and regularity in the performance of activities
- Internal Audits
- Legal advice would be sought at the earliest opportunity from specialised lawyers
- Peer review of material work and appropriate underwriting, claims and other authority limits in place
- Insurance against property damage that could cause business disruption

The Group will continue to use the risk mitigation techniques mentioned above, continuously aiming at enhancing them to reduce risk. The Group does not plan to enter or purchase any additional operational risk mitigation products over the planning period.

3.5.4 Risk Sensitivity

Due to the complexity of the Operational risk, no explicit sensitivities have been performed for the risk. The Group's capital provides an adequate buffer to absorb losses due to operational risks higher than those assumed by Standard Formula.

4 Valuation for solvency purposes

4.1 Assets

All assets and liabilities, listed in the Tables below are valued in accordance with the Solvency II Framework. Assets and liabilities are valued on the assumption that either the Group or the Company will pursue the business as a going concern. No changes in the valuations methods occurred during the year under review.

Neither the Group nor the Company has any off-balance sheet assets or liabilities.

Group:

£'000	Solvency II	Valuation
Goodwill	-	107,671
Deferred technical costs	-	2,761
Property, Plant & Equipment	4,902	4,902
Reinsurance recoverable	12,612	16,300
Deposits to cedants	19,944	19,944
Insurance & intermediaries' receivables	5,020	5,020
Reinsurance receivables	20,241	20,241
Cash and cash equivalents	13,832	13,832
Any other assets, not elsewhere shown	11,287	11,287
Total Assets	87,838	201,958

Company:

£'000	Solvency II	Valuation
Deferred technical costs	-	4,145
Property (other than own use)	4,844	4,844
Participations	692	502
Equities	-	-
Reinsurance recoverable	12,613	16,034
Deposits to cedants	19,944	19,944
Insurance & intermediaries' receivables	3,413	3,413
Reinsurance receivables	1,564	1,564
Cash and cash equivalents	6,287	6,287
Any other assets, not elsewhere shown	624	624
Total Assets	49,981	57,357

Reinsurance Assets:

The benefits to which the Group is entitled under its reinsurance contracts held are recognised as reinsurers' share of technical provisions or receivables from reinsurers (unless netted off against amounts payable to reinsurers). These assets consist of short term balances due from reinsurers (classified within receivables), as well as recoverables (classified as reinsurers' share of technical provisions) that are dependent on the expected claims and benefits arising under the related reinsured insurance contracts.

Properties:

The Group and Company hold investment property in the UK currently valued at £4.90m and £4.84m respectively.

4.1.1 Differences between GAAP and Solvency II valuation

Differences exist for Reinsurance Recoverables, Deferred Acquisition Cost and Participation investments described in detail below:

Reinsurance recoverables:

Reinsurance Recoverables represent the difference between Gross and Net provisions. On a Solvency II valuation basis these are valued on a best estimate basis. Reduction of the reinsurance recoverables to allow for expected losses due to the default of counterparty is also applied.

Deferred Acquisition Cost (DAC):

There is no concept of Deferred Acquisition Costs in Solvency II. The premium provision only allows for future expense cash flows in relation to policies already in-force. Initial expenses such as up-front commissions will have occurred in the past and so not been allowed in the premium provision.

Participation:

The Company has an investment in a subsidiary, the valuation of this asset under GAAP is the value of shares held at nominal value whereas the Solvency II presented is its Net Asset position.

Technical provisions:

The Technical provisions are defined as the probability-weighted average of future cashflows, discounted to consider the time value of money considering all possible future scenarios. Technical provisions are grouped into the following key components:

- Claims Provisions: Best Estimate of provisions relating to the earned exposure
- Premium Provisions: Best Estimate of provisions that relate to the unearned exposure
- Risk Margin: Additional provision to bring the best estimate to the level required to transfer the insurance obligations to a third party

Company:

£'000	Claims Provision		Premium Provision		Risk Margin
Line Of Business	Gross BE	RI Recoverable	Gross BE	RI Recoverable	
Motor TPL	22,882	9,043	7,130	2,025	1,146
Other motor	769	304	1,234	351	39
Annuities streaming from non-life obligations	898	890	-	-	1
Total	24,549	10,237	8,364	2,376	1,186

4.1.2 Claims Provision

The provision for claims outstanding relates to claim events that have already occurred, regardless of whether the claims arising from those events have been reported or not. The components of the claims provision under GAAP are the Case by Case Estimates (OSLR), the Incurred But Not Reported (IBNR) and the Incurred But Not Enough Reported (IBNER). Under Solvency II, the reserves are discounted to allow for the time value of money.

Several methods have been applied to calculate this reserve, namely the Chain Ladder on Paid and Incurred claims, the Loss Ratio method and the Bornhuetter Ferguson method. The methods applied, capture both the IBNR and IBNER reserves.

When triangulation methods are used, there are many issues to consider that may invalidate the underlying assumption that the future claims development is likely to be in line with the past claims

development (i.e. Distortions caused by “Large Losses”, Changes in claims handling procedures, Changes in Claims reporting processes, One-off Claims Reviews, Changes in Reserving Policy, Changes in Legislation etc.)

Therefore, actuarial judgment was used during the reserving process rather than the mechanical application of a triangulation method to the data. Considerable care should be taken in applying the method that prevents unusual and one-off aspects in the data which have a significant impact on the results.

In general, the development factors were chosen based on the average and weighted average of the development factors of the 10 previous accident years but also considering any trends of either deterioration or improvement during the last 3-4 accident years.

4.1.3 Premium Provision

The calculation of the best estimate of the premium provision relates to all future cashflows arising from future events, in relation to unexpired policies. Such cash flows relate mostly to future claims, administration expenses and reinsurance.

Premium provision is determined on a prospective basis considering the expected cash inflows, cash outflows and time value of money. The main expected cash flows were estimated by applying an appropriate prospective combined ratio to the Unearned Premium Reserve.

On the basis of the data analysis, this methodology and its underlying model and assumptions are deemed to be realistic for each line of business. The conditions rendering this method valid are met, namely:

- it can be expected that the combined ratio, explained below, remains stable over the run-off period of the premium provision;
- a reliable estimate of the combined ratio can be made;
- the unearned premium is an adequate exposure measure for estimating future claims and expenses during the unexpired risk period.

The Combined Ratio is defined as the sum of the expense ratio, the claims ratio and the reinsurance cost ratio. This enables the claims forecast and the expense forecast to be modelled separately. For this valuation, we assumed that “Expenses”, under the Premium Provision, include all expense items, except acquisition costs.

The difference between the Premium Provision and the current UPR represents profits (losses if negative) that are expected to emerge during the remaining duration of unexpired policies.

4.1.4 Risk Margin

The Risk Margin is equivalent to the amount that would be paid to another insurance company to take over the Company’s insurance obligations. The Risk Margin is calculated by determining the cost of providing an amount of eligible Own Funds equal to the SCR necessary to support the Company’s reinsurance obligations over the lifetime thereof. This rate, called the Cost-of-Capital, is prescribed by EIOPA and currently stands at 6%.

4.1.5 Discounting

The payment pattern of the reserves has been derived using the historical payment pattern, as observed in the Paid Claims triangles. The GBP risk free curve (with no volatility adjustment) as at the valuation date, published by EIOPA, has been used for discounting. As expected, the impact of discounting was very small due to the short-term nature of the business and the prevailing low interest rates.

4.1.6 Level of Uncertainty

Ultimate claims, when fully settled, will turn out to be different from the results shown in this report. This uncertainty results from many sources and is normal for any actuarial investigation. Some of the sources contributing to uncertainty include:

- The inherent uncertainty in the process of statistical estimation
- The extent to which past development patterns are an indication of likely future development patterns
- Uncertainty in the level of future claims inflation, particularly bodily injury claims
- Uncertainty about claim propensity and severity given the change in the mix of business experienced recently

To calculate the statistical uncertainty, we used the Mack method, which is a generally accepted actuarial method.

In addition to the above, many methods have been used to calculate the Motor reserve (i.e. Chain Ladder on Paid and Incurred Claims, the Expected Loss Ratio method, the Bornhuetter Ferguson method and the Average Cost per Claim).

4.1.7 Differences between Solvency II Valuation and GAAP Valuation

Company:

SOLVENCY II £'000	CLAIMS PROVISION	PREMIUM PROVISION	RISK MARGIN
Gross	24,549	8,364	1,186
RI Recoverable	10,237	2,376	-
Net	14,311	5,988	1,186

GAAP £'000	CASE ESTIMATES & IBNR	UPR
Gross	24,737	15,658
RI	10,413	5,621
Net	14,324	10,037

The main valuation principles of Solvency II leading to differences from reserves shown in the Financial Statements are:

- Removal of any implicit or explicit margin for prudence.
- Allowance for time value of money through the discounting of future cash flows.
- Consideration of ENIDs (Events Not In Data) such as Binary and Extreme events.
- In the calculation of the Premium Provision under Solvency II, an insurer may take credit for profits embedded in unexpired policies. Under GAAP this is disallowed and any profits embedded in the UPR may not be recognised until the expiry of these contracts.
- There is no concept of risk margin under the current GAAP valuation.
- In addition to differences streaming from requirements to value in line with gross liabilities, there are also differences in requirements specific to the valuation of reinsurance. These include the requirement to allow for expected non-payment due to default or dispute.

4.1.8 Additional Disclosures

As at 28 February 2022, there was no material changes in the methodology used when compared to 28 February 2021.

4.2 Valuation of other liabilities

4.2.1 Value of other liabilities

Company:

£'000	SOLVENCYII	GAAP
Provisions other than technical provisions	-	-
Deferred tax liabilities	-	-
Reinsurance payables	-	-
Payables (trade, not insurance)	144	144

4.3 Any other information

There is no other material information regarding the valuation of assets and liabilities for solvency purposes.

5 Capital Management

5.1 Own Funds

5.1.1 Objectives, policies and processes employed for managing its Own Funds

The objective of capital management is to maintain, at all times, sufficient Own Funds to cover the SCR and MCR with an appropriate buffer. These should be of sufficient quality to meet the eligibility requirements in Article 82 of the Delegated Regulation. Both the Group and Company hold regular Board meetings, at least quarterly, in which the ratio of eligible Own Funds over SCR and MCR are reviewed. As part of Own Funds management, the Group prepares annual solvency projections and reviews the structure of Own Funds and future requirements. The business plan, which forms the base of the ORSA, contains a three-year projection of funding requirements and helps focus actions for future funding.

The timing of production of the Group's ORSA has now been aligned with the Group's business planning processes.

5.1.2 Information on the structure, amount and quality of Own Funds at the end of the reporting period and at the end of the previous reporting period

The following tables show the structure of Own Funds as at 28 February 2022 as well as at 28 February 2021.

Group:

Own Funds £'000	Feb-2022
Ordinary share capital	114,500
Reconciliation reserve	(82,724)
Total Basic Own Funds	31,776

Company:

Own Funds £'000	Feb-2022	Feb-2021
Ordinary share capital	14	14
Share Premium account related to ordinary share capital	987	987
Preference shares	689	689
Reconciliation reserve	14,050	10,889
Total Basic Own Funds	15,739	12,579

5.1.3 Eligible amount of Own Funds to cover SCR & MCR

The composition of Own Funds as at 28 February 2022 and the classification into tiers is shown below:

Group:

Eligible Own Funds £'000	Total	Tier 1	Tier 2	Tier 3
Ordinary share capital	114,500	114,500	-	-
Reconciliation reserve	(82,724)	(82,724)	-	-
Total Basic Own Funds	31,776	31,776	-	-

Company:

Eligible Own Funds £'000	Total	Tier 1	Tier 2	Tier 3
Ordinary share capital	14	14	-	-
Share Premium account related to ordinary share capital	987	987	-	-
Preference share capital	689	689	-	-
Reconciliation reserve	14,050	14,050	-	-
Total Basic Own Funds	15,739	15,739	-	-

All the above Own Funds items are eligible to cover the SCR and MCR.

5.1.4 Material terms and conditions of the main items of Own Funds held by the undertaking

As shown above, Own Funds (at a Company level) are mainly composed of ordinary share capital, preference share capital and retained profits and this is not expected to change over the business planning horizon. Consequently, these Own Funds items have no maturity or call dates and therefore their duration expands beyond the duration of liabilities.

5.1.5 GAAP Equity vs Own Funds

The following summary table shows the comparisons and movement in the GAAP and Solvency II valuation of assets, liabilities and Own Funds.

Group:

	GAAP £'000	Solvency II £'000	Movement £'000
Total Assets	201,959	87,840	(114,119)
Total Liabilities	62,683	56,064	(6,619)
Total Own Funds	139,276	31,776	(107,500)

Company:

	GAAP £'000	Solvency II £'000	Movement £'000
Total Assets	57,357	49,981	(7,376)
Total Liabilities	40,539	34,242	(6,297)
Total Own Funds	16,819	15,739	(1,079)

The movement in the valuation of assets and liabilities arises from the differences in the valuation of GAAP and Solvency II standards, below:

- Goodwill (at a Group level)
- Deferred Acquisition Cost (DAC) is not included under Solvency II
- Differences in gross technical provisions and reinsurance recoverables (as explained in the previous section)
- Valuation of participation investments

5.1.6 *The expected developments of the undertaking's Own Funds over its business planning period*

The development of Own Funds over the Company's business planning period based on the most recent Group ORSA projections are summarised in the table below.

Group:

Eligible Own Funds to meet SCR £'000	Feb-23	Feb-24	Feb-25
Total Own Funds	31,507	42,693	57,767

Company:

Eligible Own Funds to meet SCR £'000	Feb-23	Feb-24	Feb-25
Total Own Funds	16,104	18,094	20,413

5.1.7 *Whether there is any intention to repay or redeem any Own Fund item*

There is no intention to repay or redeem any Own Fund item.

5.1.8 *Plans to raise additional Own Funds*

There are no plans to raise additional Own Funds.

5.2 Solvency Capital Requirement and Minimum Capital Requirement

5.2.1 Amounts of SCR and MCR

As at 28 February 2022 the SCR of the Group was calculated at £13.09m and the MCR at £3.61m.

As at 28 February 2022 the SCR of the Company was calculated at £9.20m and the MCR at £3.61m.

5.2.2 Breakdown of SCR by risk modules

The following table shows the SCR split by risk modules:

Group:

Solvency Capital Requirement £'000	Feb-22
Market risk	1,654
Counterparty default risk	4,102
Non-Life underwriting risk	10,799
Life underwriting risk	6
Sum of risk components	16,561
Diversification effects	(2,675)
Diversified risk	13,886
Intangible asset risk	-
Basic SCR	13,886
Operational risk	991
Adjustments	(1,791)
SCR	13,086
Total eligible own funds to meet the SCR	31,776
Solvency Ratio	243%

Company:

Solvency Capital Requirement £'000	Feb-22	Feb-21
Market risk	1,749	1,608
Counterparty default risk	1,279	1,449
Non-Life underwriting risk	8,111	7,343
Life underwriting risk	6	6
Sum of risk components	11,145	10,405
Diversification effects	(1,707)	(1,669)
Diversified risk	9,438	8,736
Intangible asset risk	-	-
Basic SCR	9,438	8,736
Operational risk	991	989
Adjustments	(1,226)	(915)
SCR	9,202	8,809
Total eligible own funds to meet the SCR	15,739	12,579
Solvency Ratio	171%	143%

5.2.3 Simplifications

No simplifications have been used for any of the modules or sub-modules of the SCR.

5.2.4 Undertaking-specific parameters

The Company has not used undertaking-specific parameters for any of the parameters of the Standard Formula.

5.2.5 Information on the inputs used to calculate the MCR

The inputs used in the calculation of the MCR are presented in the table below:

Group and Company:

Minimum Capital Requirement £'000s	Feb-22	Feb-21
Linear MCR	3,605	3,327
SCR	9,202	8,809
MCR cap	4,141	3,964
MCR floor	2,301	2,202
Combined MCR	3,605	3,327
Absolute floor of the MCR	3,122	3,346
MCR	3,605	3,346

5.2.6 *The expected development of the undertaking's SCR and MCR over the business planning period*

The table below shows the forward-looking figures for the SCR over the business planning horizon.

Group:

Solvency Capital Requirement £'000	Feb-23	Feb-24	Feb-25
SCR	12,563	14,255	15,585
Eligible Own Funds	31,507	42,693	57,767
Solvency Ratio	251%	300%	371%

Company:

Solvency Capital Requirement £'000	Feb-23	Feb-24	Feb-25
SCR	9,771	11,101	11,851
Eligible Own Funds	16,104	18,094	20,413
Solvency Ratio	165%	163%	172%

The figures above demonstrate that over the business planning horizon, the Company expects to further strengthen its current levels of capital adequacy.

Finally, the MCR is expected to remain at the same levels over the business planning horizon.

5.3 Non-compliance with the MCR and non-compliance with the SCR

5.3.1 *Non-compliance with the MCR & SCR*

The Group/Company has been continuously compliant with the both the MCR and the SCR throughout the period/year.

5.3.2 *Any reasonably foreseeable risk of non-compliance with the MCR or SCR*

Based on the projections of the solvency position performed as part of the Group ORSA and on the resilience the Company has shown to the stress tests performed, there is no reasonably foreseeable risk of non-compliance with the MCR or SCR.

5.3.3 *Plans to ensure compliance with SCR and MCR is maintained*

The Company will closely monitor actual experience compared to what was assumed in the Group ORSA projections. Should any material deviation occur, an investigation will take place to identify the underlying source and take corrective actions.

Moreover, Group ORSA projections will continue to be performed every year to ensure each and every year that the business strategy of the Group will be in line with its target solvency ratio.

Appendices

Appendix A: Quantitative Reporting Templates

Electric Bidco Group	
Templates	Detail
S.02.01.02	Balance sheet
S.05.01.02	Premiums, claims and expenses by line of business
S.05.02.01	Premiums, claims and expenses by country
S.23.01.22	Own Funds
S.25.01.22	Solvency Capital Requirement – for groups on Standard Formula
S.32.01.22	Undertakings in the scope of the group

Carraig Insurance Company Limited	
Templates	Detail
S.02.01.02	Balance Sheet
S.05.01.02	Premiums, claims and expenses by line of business
S.05.02.01	Premiums, claims and expenses by country
S.12.01.02	Life and Health Technical Provisions
S.17.01.02	Non-Life Technical Provisions
S.19.01.21	Non-Life Insurance Claims
S.23.01.01	Own Funds
S.25.01.22	Solvency Capital Requirement – for undertakings on Standard Formula
S.28.01.01	Minimum Capital Requirement – Only Life or only Non-Life insurance or reinsurance activity

Electric Bidco Limited

Solvency and Financial Condition Report

28 February 2022

Annex I
S.02.01.02
Balance sheet

	Solvency II value
	C0010
Assets	
Intangible assets	R0030
Deferred tax assets	R0040
Pension benefit surplus	R0050
Property, plant & equipment held for own use	R0060
Investments (other than assets held for index-linked and unit-linked contracts)	R0070 4,902
Property (other than for own use)	R0080 4,902
Holdings in related undertakings, including participations	R0090
Equities	R0100
Equities - listed	R0110
Equities - unlisted	R0120
Bonds	R0130
Government Bonds	R0140
Corporate Bonds	R0150
Structured notes	R0160
Collateralised securities	R0170
Collective Investments Undertakings	R0180
Derivatives	R0190
Deposits other than cash equivalents	R0200
Other investments	R0210
Assets held for index-linked and unit-linked contracts	R0220
Loans and mortgages	R0230
Loans on policies	R0240
Loans and mortgages to individuals	R0250
Other loans and mortgages	R0260
Reinsurance recoverables from:	R0270 12,613
Non-life and health similar to non-life	R0280 11,723
Non-life excluding health	R0290 11,723
Health similar to non-life	R0300
Life and health similar to life, excluding health and index-linked and unit-linked	R0310 890
Health similar to life	R0320
Life excluding health and index-linked and unit-linked	R0330 890
Life index-linked and unit-linked	R0340
Deposits to cedants	R0350 19,944
Insurance and intermediaries receivables	R0360 3,456
Reinsurance receivables	R0370 1,564
Receivables (trade, not insurance)	R0380 20,241
Own shares (held directly)	R0390
Amounts due in respect of own fund items or initial fund called up but not yet paid in	R0400
Cash and cash equivalents	R0410 13,832
Any other assets, not elsewhere shown	R0420 11,288
Total assets	R0500 87,840

Annex I
S.02.01.02
Balance sheet

Liabilities

	Solvency II value
	C0010
Technical provisions – non-life	R0510 33,385
Technical provisions – non-life (excluding health)	R0520 33,385
TP calculated as a whole	R0530
Best Estimate	R0540 32,015
Risk margin	R0550 1,370
Technical provisions - health (similar to non-life)	R0560
TP calculated as a whole	R0570
Best Estimate	R0580
Risk margin	R0590
Technical provisions - life (excluding index-linked and unit-linked)	R0600 899
Technical provisions - health (similar to life)	R0610 899
TP calculated as a whole	R0620
Best Estimate	R0630 898
Risk margin	R0640 1
Technical provisions – life (excluding health and index-linked and unit-linked)	R0650
TP calculated as a whole	R0660
Best Estimate	R0670
Risk margin	R0680
Technical provisions – index-linked and unit-linked	R0690
TP calculated as a whole	R0700
Best Estimate	R0710
Risk margin	R0720
Contingent liabilities	R0740
Provisions other than technical provisions	R0750
Pension benefit obligations	R0760
Deposits from reinsurers	R0770
Deferred tax liabilities	R0780
Derivatives	R0790
Debts owed to credit institutions	R0800
Financial liabilities other than debts owed to credit institutions	R0810
Insurance & intermediaries payables	R0820 3,090
Reinsurance payables	R0830
Payables (trade, not insurance)	R0840 7,608
Subordinated liabilities	R0850
Subordinated liabilities not in BOF	R0860
Subordinated liabilities in BOF	R0870
Any other liabilities, not elsewhere shown	R0880 11,082
Total liabilities	R0900 56,064
Excess of assets over liabilities	R1000 31,776

S.05.01.02

Premiums, claims and expenses by line of business

		Line of Business for: non-life insurance and reinsurance obligations (direct business and accepted proportional)												Line of business for:					Total
		Medical expense insurance	Income protectio n insurance	Workers' compens ation insurance	Motor vehicle liability insurance	Other motor insurance	Marine, aviation and transport insurance	Fire and other damage to property insurance	General liability insurance	Credit and suretyshi p insurance	Legal expenses insurance	Assistanc e	Miscellan eous financial loss	Health	Casualty	Marine, aviation, transport	Property		
		C0010	C0020	C0030	C0040	C0050	C0060	C0070	C0080	C0090	C0100	C0110	C0120	C0130	C0140	C0150	C0160	C0200	
Premiums written																			
Gross - Direct Business	R0110				8,565	1,482												10,047	
Gross - Proportional	R0120				19,145	3,313												22,458	
Gross - Non-proportional	R0130																		
Reinsurers' share	R0140				10,010	1,732												11,742	
Net	R0200				17,701	3,063												20,764	
Premiums earned																			
Gross - Direct Business	R0210				9,527	1,649												11,176	
Gross - Proportional	R0220				18,621	3,223												21,844	
Gross - Non-proportional	R0230																		
Reinsurers' share	R0240				11,077	1,917												12,994	
Net	R0300				17,071	2,934												20,025	
Claims incurred																			
Gross - Direct Business	R0310				3,683	637												4,320	
Gross - Proportional	R0320				7,968	1,379												9,347	
Gross - Non-proportional	R0330																		
Reinsurers' share	R0340				2,831	490												3,321	
Net	R0400				8,820	1,526												10,346	
Changes in other																			
Gross - Direct Business	R0410																		
Gross - Proportional	R0420																		
Gross - Non-proportional	R0430																		
Reinsurers' share	R0440																		
Net	R0500																		
Expenses incurred	R0550				6,631	1,148												7,779	
Other expenses	R1200																		
Total expenses	R1300																	7,779	

Annex I

S.05.01.02

Premiums, claims and expenses by line of business

		Line of Business for: life insurance obligations						Life reinsurance obligations		Total
		Health insurance	Insurance with profit participation	Index-linked and unit-linked insurance	Other life insurance	Annuities stemming from non-life insurance contracts and relating to health insurance obligations	Annuities stemming from non-life insurance contracts and relating to insurance obligations other than health insurance obligations	Health reinsurance	Life-reinsurance	
		C0210	C0220	C0230	C0240	C0250	C0260	C0270	C0280	C0300
Premiums written										
Gross	R1410									
Reinsurers' share	R1420									
Net	R1500									
Premiums earned										
Gross	R1510									
Reinsurers' share	R1520									
Net	R1600									
Claims incurred										
Gross	R1610									
Reinsurers' share	R1620									
Net	R1700									
Changes in other technical										
Gross	R1710									
Reinsurers' share	R1720									
Net	R1800									
Expenses incurred	R1900									
Other expenses	R2500									
Total expenses	R2600									

Annex I

S.05.02.01

Premiums, claims and expenses by country

		Home Country	Top 5 countries (by amount of gross premiums written) – non-life obligations					Total Top 5 and home country
		C0010	C0020	C0030	C0040	C0050	C0060	C0070
	R0010	GB						
		C0080	C0090	C0100	C0110	C0120	C0130	C0140
Premiums written								
Gross – Direct Business	R0110		10,047					10,047
Gross – Proportional reinsurers' share	R0120		22,458					22,458
Gross – Non-proportional reinsurers' share	R0130							
Reinsurers' share	R0140		11,742					11,742
Net	R0200		20,764					20,764
Premiums earned								
Gross – Direct Business	R0210		11,176					11,176
Gross – Proportional reinsurers' share	R0220		21,844					21,844
Gross – Non-proportional reinsurers' share	R0230							
Reinsurers' share	R0240		12,994					12,994
Net	R0300		20,025					20,025
Claims incurred								
Gross – Direct Business	R0310		4,320					4,320
Gross – Proportional reinsurers' share	R0320		9,347					9,347
Gross – Non-proportional reinsurers' share	R0330							
Reinsurers' share	R0340		3,321					3,321
Net	R0400		10,346					10,346
Changes in other technical provisions								
Gross – Direct Business	R0410							
Gross – Proportional reinsurers' share	R0420							
Gross – Non-proportional reinsurers' share	R0430							
Reinsurers' share	R0440							
Net	R0500							
Expenses incurred	R0550		7,779					7,779
Other expenses	R1200							
Total expenses	R1300							7,779

Annex I

S.05.02.01

Premiums, claims and expenses by country

		Home Country	Top 5 countries (by amount of gross premiums written) – life obligations					Total Top 5 and home country
		C0150	C0160	C0170	C0180	C0190	C0200	C0210
	R1400							
		C0220	C0230	C0240	C0250	C0260	C0270	C0280
Premiums written								
Gross	R1410							
Reinsurers' share	R1420							
Net	R1500							
Premiums earned								
Gross	R1510							
Reinsurers' share	R1520							
Net	R1600							
Claims incurred								
Gross	R1610							
Reinsurers' share	R1620							
Net	R1700							
Changes in other technical provisions								
Gross	R1710							
Reinsurers' share	R1720							
Net	R1800							
Expenses incurred	R1900							
Other expenses	R2500							
Total expenses	R2600							

Annex I
S.23.01.22
Own funds

Basic own funds before deduction for participations in other financial sector

		Total	Tier 1 - unrestricted	Tier 1 - restricted	Tier 2	Tier 3
		C0010	C0020	C0030	C0040	C0050
Ordinary share capital (gross of own shares)	R0010	114,500	114,500			
Non-available called but not paid in ordinary share capital at group level	R0020					
Share premium account related to ordinary share capital	R0030					
Initial funds, members' contributions or the equivalent basic own - fund item for mutual and mutual-type undertakings	R0040					
Subordinated mutual member accounts	R0050					
Non-available subordinated mutual member accounts at group level	R0060					
Surplus funds	R0070					
Non-available surplus funds at group level	R0080					
Preference shares	R0090					
Non-available preference shares at group level	R0100					
Share premium account related to preference shares	R0110					
Non-available share premium account related to preference shares at group level	R0120					
Reconciliation reserve	R0130	-82,724	-82,724			
Subordinated liabilities	R0140					
Non-available subordinated liabilities at group level	R0150					
An amount equal to the value of net deferred tax assets	R0160					
The amount equal to the value of net deferred tax assets not available at the group level	R0170					
Other items approved by supervisory authority as basic own funds not specified above	R0180					
Non available own funds related to other own funds items approved by supervisory authority	R0190					
Minority interests (if not reported as part of a specific own fund item)	R0200					
Non-available minority interests at group level	R0210					
Own funds from the financial statements that should not be represented by the reconciliation reserve and do not meet the criteria to be classified as Solvency II own funds						
Own funds from the financial statements that should not be represented by the reconciliation reserve and do not meet the criteria to be classified as Solvency II own funds	R0220					
Deductions						
Deductions for participations in other financial undertakings, including non-regulated undertakings carrying out financial activities	R0230					
whereof deducted according to art 228 of the Directive 2009/138/EC	R0240					
Deductions for participations where there is non-availability of information (Article 229)	R0250					
Deduction for participations included by using D&A when a combination of methods is used	R0260					
Total of non-available own fund items	R0270					
Total deductions	R0280					
Total basic own funds after deductions	R0290	31,776	31,776			
Ancillary own funds						
Unpaid and uncalled ordinary share capital callable on demand	R0300					
Unpaid and uncalled initial funds, members' contributions or the equivalent basic own fund item for mutual and mutual - type undertakings, callable on demand	R0310					
Unpaid and uncalled preference shares callable on demand	R0320					
Letters of credit and guarantees other than under Article 96(2) of the Directive 2009/138/EC	R0350					
Letters of credit and guarantees under Article 96(2) of the Directive 2009/138/EC	R0340					
Supplementary members calls under first subparagraph of Article 96(3) of the Directive 2009/138/EC	R0360					
Supplementary members calls - other than under first subparagraph of Article 96(3) of the Directive	R0370					
Non available ancillary own funds at group level	R0380					
Other ancillary own funds	R0390					
Total ancillary own funds	R0400					
Own funds of other financial sectors						
Reconciliation reserve						
Institutions for occupational retirement provision	R0410					
Non regulated entities carrying out financial activities	R0420					
Total own funds of other financial sectors	R0430					
Own funds when using the D&A, exclusively or in combination of method 1						
Own funds aggregated when using the D&A and combination of method	R0450					
Own funds aggregated when using the D&A and a combination of method net of IGT	R0460					
Total available own funds to meet the consolidated group SCR (excluding own funds from other financial sector and from the undertakings included via D&A)	R0520	31,776	31,776			
Total available own funds to meet the minimum consolidated group SCR	R0530	31,776	31,776			
Total eligible own funds to meet the consolidated group SCR (excluding own funds from other financial sector and from the undertakings included via D&A)	R0560	31,776	31,776			
Total-eligible own funds to meet the minimum consolidated group SCR	R0570	31,776	31,776			
Minimum consolidated Group SCR	R0610	3,605				
Ratio of Eligible own funds to Minimum Consolidated Group SCR	R0650	881.00%				
Total eligible own funds to meet the group SCR (including own funds from other financial sector and from the undertakings included via D&A)	R0660	31,776	31,776			
Group SCR	R0680	13,086				
Ratio of Eligible own funds to group SCR including other financial sectors and the undertakings included via D&A	R0690	243.00%				
Reconciliation reserve						
Excess of assets over liabilities	R0700	31,776				
Own shares (included as assets on the balance sheet)	R0710					
Forseeable dividends, distributions and charges	R0720					
Other basic own fund items	R0730	114,500				
Adjustment for restricted own fund items in respect of matching adjustment portfolios and ring fenced funds	R0740					
Other non available own funds	R0750					
Reconciliation reserve before deduction for participations in other financial sector	R0760	-82,724				
Expected profits						
Expected profits included in future premiums (EPIFP) - Life business	R0770					
Expected profits included in future premiums (EPIFP) - Non- life business	R0780					
Total EPIFP	R0790					

Annex I
S.25.01.22
Solvency Capital Requirement - for groups on Standard Formula

Market risk
Counterparty default risk
Life underwriting risk
Health underwriting risk
Non-life underwriting risk
Diversification
Intangible asset risk
Basic Solvency Capital Requirement

Calculation of Solvency Capital Requirement
Operational risk
Loss-absorbing capacity of technical provisions
Loss-absorbing capacity of deferred taxes
Capital requirement for business operated in accordance with Art. 4 of Directive 2003/41/EC
Solvency capital requirement excluding capital add-on
Capital add-on already set
Solvency capital requirement

	Gross solvency capital requirement	USP	Simplifications
	C0110	C0090	C0120
R0010	1,655		
R0020	4,102		
R0030	6		
R0040			
R0050	10,799		
R0060	-2,675		
R0070			
R0100	13,886		
	C0100		
R0130	991		
R0140			
R0150	-1,790		
R0160			
R0200	13,086		
R0210			
R0220	13,086		

Other information on SCR

Capital requirement for duration-based equity risk sub-module
Total amount of Notional Solvency Capital Requirements for remaining part
Total amount of Notional Solvency Capital Requirements for ring fenced funds
Total amount of Notional Solvency Capital Requirements for matching adjustment portfolios
Diversification effects due to RFF nSCR aggregation for article 304
Minimum consolidated group solvency capital requirement

R0400	
R0410	
R0420	
R0430	
R0440	
R0470	3,605
R0500	
R0510	
R0520	
R0530	
R0540	
R0550	
R0560	
R0570	13,086

Information on other entities

Capital requirement for other financial sectors (Non-insurance capital requirements)
Capital requirement for other financial sectors (Non-insurance capital requirements) - Credit institutions, investment firms and financial institutions, alternative investment funds managers, UCITS management companies
Capital requirement for other financial sectors (Non-insurance capital requirements) - Institutions for occupational retirement provisions
Capital requirement for other financial sectors (Non-insurance capital requirements) - Capital requirement for non-regulated entities carrying out financial activities
Capital requirement for non-controlled participation requirements
Capital requirement for residual undertakings

Overall SCR

SCR for undertakings included via D and A
Solvency capital requirement

Annex I
S.32.01.22
Undertakings in the scope of the group

Country	Identification code of the undertaking	Type of code of the ID of the undertaking	Legal name of the undertaking	Type of undertaking	Legal form	Category (mutual/association)	Supervisory Authority	Criteria of influence						Inclusion in the scope of group		Group solvency
								% capital share	% used for the establishment of consolidated	% voting rights	Other criteria	Level of influence	Proportional share used for group solvency calculation	YES/NO	Date of decision if art. 214 is applied	Method used and under method 1, treatment of the undertaking
C0010	C0020	C0030	C0040	C0050	C0060	C0070	C0080	C0180	C0190	C0200	C0210	C0220	C0230	C0240	C0250	C0260
GI	LEI/213800ARVSEGUU	LEI	Carraig Insurance Company Limited	2	company limited by shares	2	Gibraltar Financial Services Commission	100.00%	100.00%	100.00%		1	100.00%	1		1
GB	SC/CAMATICS	SC	Camatics Limited	10	company limited by shares	2		100.00%	100.00%	100.00%		1	100.00%	1		1
GB	SC/CPPL	SC	Carraig Premium Finance Limited	10	company limited by shares	2		100.00%	100.00%	100.00%		1	100.00%	1		1
GB	SC/DCL	SC	Direct Commercial Limited	10	company limited by shares	2		100.00%	100.00%	100.00%		1	100.00%	1		1
GI	SC/ELECTRICBIDCO	SC	Electric BidCo Limited	5	company limited by shares	2								1		1
GB	SC/TCM	SC	TCM Advisors Ltd	10	company limited by shares	2		100.00%	100.00%	100.00%		1	100.00%	1		1

Carraig Insurance Company Limited

Solvency and Financial Condition Report

28 February 2022

Annex I
S.02.01.02
Balance sheet

		Solvency II value
		C0010
Assets		
Intangible assets	R0030	-
Deferred tax assets	R0040	-
Pension benefit surplus	R0050	-
Property, plant & equipment held for own use	R0060	-
Investments (other than assets held for index-linked and unit-linked contracts)	R0070	5,536,140
Property (other than for own use)	R0080	4,844,440
Holdings in related undertakings, including participations	R0090	691,700
Equities	R0100	-
Equities - listed	R0110	-
Equities - unlisted	R0120	-
Bonds	R0130	-
Government Bonds	R0140	-
Corporate Bonds	R0150	-
Structured notes	R0160	-
Collateralised securities	R0170	-
Collective Investments Undertakings	R0180	-
Derivatives	R0190	-
Deposits other than cash equivalents	R0200	-
Other investments	R0210	-
Assets held for index-linked and unit-linked contracts	R0220	-
Loans and mortgages	R0230	-
Loans on policies	R0240	-
Loans and mortgages to individuals	R0250	-
Other loans and mortgages	R0260	-
Reinsurance recoverables from:	R0270	12,613,335
Non-life and health similar to non-life	R0280	11,723,307
Non-life excluding health	R0290	11,723,307
Health similar to non-life	R0300	-
Life and health similar to life, excluding health and index-linked and unit-linked	R0310	890,028
Health similar to life	R0320	-
Life excluding health and index-linked and unit-linked	R0330	890,028
Life index-linked and unit-linked	R0340	-
Deposits to cedants	R0350	19,944,119
Insurance and intermediaries receivables	R0360	3,413,427
Reinsurance receivables	R0370	1,563,720
Receivables (trade, not insurance)	R0380	-
Own shares (held directly)	R0390	-
Amounts due in respect of own fund items or initial fund called up but not yet paid in	R0400	-
Cash and cash equivalents	R0410	6,286,814
Any other assets, not elsewhere shown	R0420	623,670
Total assets	R0500	49,981,225

Liabilities

Technical provisions – non-life	R0510	33,199,610
Technical provisions – non-life (excluding health)	R0520	33,199,610
Technical provisions calculated as a whole	R0530	-
Best Estimate	R0540	32,014,894
Risk margin	R0550	1,184,716
Technical provisions - health (similar to non-life)	R0560	-
Technical provisions calculated as a whole	R0570	-
Best Estimate	R0580	-
Risk margin	R0590	-
Technical provisions - life (excluding index-linked and unit-linked)	R0600	898,567
Technical provisions - health (similar to life)	R0610	898,567
Technical provisions calculated as a whole	R0620	-
Best Estimate	R0630	897,702
Risk margin	R0640	865
Technical provisions – life (excluding health and index-linked and unit-linked)	R0650	-
Technical provisions calculated as a whole	R0660	-
Best Estimate	R0670	-
Risk margin	R0680	-
Technical provisions – index-linked and unit-linked	R0690	-
Technical provisions calculated as a whole	R0700	-
Best Estimate	R0710	-
Risk margin	R0720	-
Contingent liabilities	R0740	-
Provisions other than technical provisions	R0750	-
Pension benefit obligations	R0760	-
Deposits from reinsurers	R0770	-
Deferred tax liabilities	R0780	-
Derivatives	R0790	-
Debts owed to credit institutions	R0800	-
Financial liabilities other than debts owed to credit institutions	R0810	-
Insurance & intermediaries payables	R0820	-
Reinsurance payables	R0830	-
Payables (trade, not insurance)	R0840	143,726
Subordinated liabilities	R0850	-
Subordinated liabilities not in Basic Own Funds	R0860	-
Subordinated liabilities in Basic Own Funds	R0870	-
Any other liabilities, not elsewhere shown	R0880	-
Total liabilities	R0900	34,241,903
Excess of assets over liabilities	R1000	15,739,322

Annex I
S.05.01.02
Premiums, claims and expenses by line of business

		Line of Business for: non-life insurance and reinsurance		Total
		Motor vehicle liability insurance	Other motor insurance	
		C0040	C0050	C0200
Premiums written				
Gross - Direct Business	R0110	8,418,816	1,457,036	9,875,852
Gross - Proportional reinsurance accepted	R0120	19,144,878	3,313,384	22,458,262
Gross - Non-proportional reinsurance accepted	R0130			
Reinsurers' share	R0140	9,887,450	1,711,211	11,598,661
Net	R0200	17,676,245	3,059,209	20,735,454
Premiums earned				
Gross - Direct Business	R0210	9,526,713	1,648,778	11,175,492
Gross - Proportional reinsurance accepted	R0220	18,620,896	3,222,699	21,843,596
Gross - Non-proportional reinsurance accepted	R0230			
Reinsurers' share	R0240	11,076,801	1,917,050	12,993,852
Net	R0300	17,070,809	2,954,427	20,025,236
Claims incurred				
Gross - Direct Business	R0310	11,374,530	1,968,578	13,343,108
Gross - Proportional reinsurance accepted	R0320	-	-	-
Gross - Non-proportional reinsurance accepted	R0330			
Reinsurers' share	R0340	2,495,435	431,882	2,927,318
Net	R0400	8,879,095	1,536,696	10,415,791
Changes in other technical provisions				
Gross - Direct Business	R0410			-
Gross - Proportional reinsurance accepted	R0420			-
Gross - Non- proportional reinsurance accepted	R0430			
Reinsurers' share	R0440			
Net	R0500			-
Expenses incurred	R0550	6,011,223	1,040,356	7,051,579
Other expenses	R1200			
Total expenses	R1300			7,051,579

Annex I

S.05.02.01

Premiums, claims and expenses by country

		Home Country	Top 5 countries	Total Top 5 and home country
		C0010	C0020	C0070
	R0010	C0080	GB	C0140
		C0080	C0090	C0140
Premiums written				
Gross - Direct Business	R0110		9,875,852	9,875,852
Gross - Proportional reinsurance accepted	R0120		22,458,262	22,458,262
Gross - Non-proportional reinsurance accepted	R0130		-	-
Reinsurers' share	R0140		11,598,661	11,598,661
Net	R0200		20,735,454	20,735,454
Premiums earned				-
Gross - Direct Business	R0210		11,175,492	11,175,492
Gross - Proportional reinsurance accepted	R0220		21,843,596	21,843,596
Gross - Non-proportional reinsurance accepted	R0230		-	-
Reinsurers' share	R0240		12,993,852	12,993,852
Net	R0300		20,025,236	20,025,236
Claims incurred				-
Gross - Direct Business	R0310		13,343,108	13,343,108
Gross - Proportional reinsurance accepted	R0320		-	-
Gross - Non-proportional reinsurance accepted	R0330		-	-
Reinsurers' share	R0340		2,927,318	2,927,318
Net	R0400		10,415,791	10,415,791
Changes in other technical provisions				-
Gross - Direct Business	R0410		-	-
Gross - Proportional reinsurance accepted	R0420		-	-
Gross - Non-proportional reinsurance accepted	R0430		-	-
Reinsurers' share	R0440		-	-
Net	R0500		-	-
Expenses incurred	R0550		7,051,579	7,051,579
Other expenses	R1200	C0080	-	-
Total expenses	R1300		7,051,579	7,051,579

Annex I
S.12.01.02
Life and Health SLT Technical Provisions

		Annuities stemming from non-life insurance contracts and relating to insurance obligation other than health insurance obligations	Total (Life other than health insurance, incl. Unit-Linked)
		C0090	C0150
Technical provisions calculated as a whole	R0010		
Total Recoverables from reinsurance/SPV and Finite Re after the adjustment for expected losses due to counterparty default	R0020		
Technical provisions calculated as a sum of BE and RM			
Best Estimate			
Gross Best Estimate	R0030	897,702	897,702
Total Recoverables from reinsurance/SPV and Finite Re	R0080	890,028	890,028
Best estimate minus recoverables from reinsurance/SPV	R0090	7,674	7,674
Risk Margin	R0100	865	865
Amount of the transitional on Technical Provisions			
Technical Provisions calculated as a whole	R0110		
Best estimate	R0120		
Risk margin	R0130		
Technical provisions - total	R0210	8,539	8,539

Annex I
S.17.01.02
Non-life Technical Provisions

	2	3	4	5	6	7	8	9	10	11	12	13	14	15	16	17	18
	Direct business and accepted proportional reinsurance												Accepted non-proportional reinsurance				
	Medical expense insurance	Income protection insurance	Workers' compensation insurance	Motor vehicle liability insurance	Other motor insurance	Marine, aviation and transport insurance	Fire and other damage to property insurance	General liability insurance	Credit and suretyship insurance	Legal expenses insurance	Assistance	Miscellaneous financial loss	Non-proportional health reinsurance	Non-proportional casualty reinsurance	Non-proportional marine, aviation and transport reinsurance	Non-proportional property reinsurance	Total Non-Life obligation
	C0020	C0030	C0040	C0050	C0060	C0070	C0080	C0090	C0100	C0110	C0120	C0130	C0140	C0150	C0160	C0170	C0180
Technical provisions calculated as a whole	R0010																
Total Recoverables from reinsurance/SPV and Finite Re after the adjustment for expected losses due to counterparty default associated to TP calculated as a whole	R0050																
Technical provisions calculated as a sum of BE and RM																	
Best estimate																	
Premium provisions																	
Gross																	
Total recoverable from reinsurance/SPV and Finite Re after the adjustment for expected losses due to counterparty default	R0060			7,129,886	1,235,962												8,365,848
Net Best Estimate of Premium Provisions	R0140			2,025,488	350,549												2,376,037
Claims provisions	R0150			5,104,398	883,413												5,987,811
Gross																	
Total recoverable from reinsurance/SPV and Finite Re after the adjustment for expected losses due to counterparty default	R0160			22,881,941	789,105												23,651,046
Net Best Estimate of Claims Provisions	R0240			9,043,308	303,962												9,347,270
Total Best estimate - gross	R0250			13,838,633	465,142												14,303,776
Total Best estimate - net	R0260			30,011,837	2,003,067												32,014,894
Risk margin	R0270			18,943,051	1,348,555												20,291,586
Amount of the transitional on Technical Provisions	R0280			1,146,190	38,526												1,184,716
Technical Provisions calculated as a whole	R0290																
Best estimate	R0300																
Risk margin	R0310																
Technical provisions - total																	
Technical provisions - total	R0320			31,158,018	2,041,592												33,199,610
Recoverable from reinsurance contract/SPV and Finite Re after the adjustment for expected losses due to counterparty default - total	R0330			11,068,796	654,512												11,723,307
Technical provisions minus recoverables from reinsurance/SPV and Finite Re -	R0340			20,089,222	1,387,081												21,476,302

Total Non-Life Business

Accident year / Underwriting year Z0010 UWR

Gross Claims Paid (non-cumulative)
(absolute amount)

Year	Development year											In Current year	Sum of years (cumulative)
	0	1	2	3	4	5	6	7	8	9	10&+		
	C0010	C0020	C0030	C0040	C0050	C0060	C0070	C0080	C0090	C0100	C0110	C0170	C0180
Prior	R0100											R0100	
N-9	R0160	665	1,873	1,392	577	573	310	377	307	1	108	R0160	108
N-8	R0170	157	741	545	291	255	137	2	7			R0170	-
N-7	R0180	1,323	5,122	3,132	2,299	1,849	1,167	248	115			R0180	115
N-6	R0190	813	3,312	1,901	945	1,079	303	311				R0190	311
N-5	R0200	1,314	4,229	2,465	1,677	1,542	520					R0200	520
N-4	R0210	1,250	6,419	3,982	1,190	626						R0210	626
N-3	R0220	2,115	7,601	3,137	2,714							R0220	2,714
N-2	R0230	1,676	4,542	2,347								R0230	2,347
N-1	R0240	1,937	6,670									R0240	6,670
N	R0250	2,111										R0250	2,111
Total												R0260	15,522
													92,301

Gross undiscounted Best Estimate Claims Provisions
(absolute amount)

Year	Development year												Year end (discounted data)	
	0	1	2	3	4	5	6	7	8	9	10&+			
Prior N-9 N-8 N-7 N-6 N-5 N-4 N-3 N-2 N-1 N		C0200	C0210	C0220	C0230	C0240	C0250	C0260	C0270	C0280	C0290	C0300	C0360	
	R0100												R0100	1,012
	R0160	-	-	-	-	1,002	1,025	716	246	126	-		R0160	-
	R0170	-	-	-	1,111	537	66	63	2	-			R0170	-
	R0180	-	-	12,436	8,131	4,047	1,439	314	45				R0180	43
	R0190	-	10,433	6,440	4,550	2,388	930	665					R0190	645
	R0200	10,102	17,212	9,939	7,322	1,830	949						R0200	921
	R0210	11,267	15,212	6,976	2,030	1,484							R0210	1,440
	R0220	11,076	16,733	5,762	3,652								R0220	3,544
	R0230	9,078	6,122	3,611									R0230	3,504
	R0240	5,052.00	7,456										R0240	7,235
R0250	5,467											R0250	5,305	
Total												R0260	23,649	

23,329.00

-

Annex I
S.23.01.01
Own funds

Basic own funds before deduction for participations in other financial sector as foreseen in article 68 of Delegated Regulation 2015/35

Ordinary share capital (gross of own shares)
Share premium account related to ordinary share capital
Initial funds, members' contributions or the equivalent basic own - fund item for mutual and mutual-type undertakings
Subordinated mutual member accounts
Surplus funds
Preference shares
Share premium account related to preference shares
Reconciliation reserve
Subordinated liabilities
An amount equal to the value of net deferred tax assets
Other own fund items approved by the supervisory authority as basic own funds not specified above

Own funds from the financial statements that should not be represented by the reconciliation reserve and do not meet the criteria to be classified as Solvency II own funds

Own funds from the financial statements that should not be represented by the reconciliation reserve and do not meet the criteria to be classified as Solvency II own funds

Deductions

Deductions for participations in financial and credit institutions

Total basic own funds after deductions

Ancillary own funds

Unpaid and uncalled ordinary share capital callable on demand
Unpaid and uncalled initial funds, members' contributions or the equivalent basic own fund item for mutual and mutual - type undertakings, callable on demand
Unpaid and uncalled preference shares callable on demand
A legally binding commitment to subscribe and pay for subordinated liabilities on demand
Letters of credit and guarantees under Article 96(2) of the Directive 2009/138/EC
Letters of credit and guarantees other than under Article 96(2) of the Directive
Supplementary members calls under first subparagraph of Article 96(3) of the Directive 2009/138/EC
Supplementary members calls - other than under first subparagraph of Article 96(3) of the Directive 2009/138/EC
Other ancillary own funds

Total ancillary own funds

Available and eligible own funds

Total available own funds to meet the SCR
Total available own funds to meet the MCR
Total eligible own funds to meet the SCR
Total eligible own funds to meet the MCR

SCR

MCR

Ratio of Eligible own funds to SCR

Ratio of Eligible own funds to MCR

	2	3	4	5	6
	Total	Tier 1 - unrestricted	Tier 1 - restricted	Tier 2	Tier 3
	C0010	C0020	C0030	C0040	C0050
R0010	13,500	13,500			
R0030	986,500	986,500			
R0040					
R0050					
R0070					
R0090					
R0110	689,075		689,075		
R0130	14,050,247	14,050,247			
R0140					
R0160					
R0180					
R0220					
R0230					
R0290	15,739,322	15,050,247	689,075		
R0300					
R0310					
R0320					
R0330					
R0340					
R0350					
R0360					
R0370					
R0390					
R0400					
R0500	15,739,322	15,050,247	689,075		
R0510	15,739,322	15,050,247	689,075		
R0540	15,739,322	15,050,247	689,075		
R0550	15,739,322	15,050,247	689,075		
R0580	9,202,254				
R0600	3,605,083				
R0620	171%				
R0640	437%				

C0060

Reconciliation reserve

Excess of assets over liabilities
Own shares (held directly and indirectly)
Foreseeable dividends, distributions and charges
Other basic own fund items
Adjustment for restricted own fund items in respect of matching adjustment portfolios and ring fenced funds

Reconciliation reserve

Expected profits

Expected profits included in future premiums (EPIFP) - Life business
Expected profits included in future premiums (EPIFP) - Non- life business

Total Expected profits included in future premiums (EPIFP)

R0700	15,739,322				
R0710	-				
R0720	-				
R0730	1,689,075				
R0740	-				
R0760	14,050,247				
R0770					
R0780					
R0790					

Annex I
S.25.01.21
Solvency Capital Requirement - for undertakings on Standard Formula

		Gross solvency capital requirement	USP	Simplifications
		C0040	C0090	C0100
Market risk	R0010	1,748,930		
Counterparty default risk	R0020	1,279,284		
Life underwriting risk	R0030	5,773		
Health underwriting risk	R0040	-		
Non-life underwriting risk	R0050	8,110,806		
Diversification	R0060	-	1,706,753	
Intangible asset risk	R0070	-		
Basic Solvency Capital Requirement	R0100	9,438,041		
Calculation of Solvency Capital Requirement		C0100		
Operational risk	R0130	990,573		
Loss-absorbing capacity of technical provisions	R0140			
Loss-absorbing capacity of deferred taxes	R0150	-	1,226,360	
Capital requirement for business operated in accordance with Art. 4 of Directive 2003/41/EC	R0160			
Solvency Capital Requirement excluding capital add-on	R0200	9,202,254		
Capital add-on already set	R0210			
Solvency capital requirement	R0220	9,202,254		
Other information on SCR				
Capital requirement for duration-based equity risk sub-module	R0400			
Total amount of Notional Solvency Capital Requirements for remaining part	R0410			
Total amount of Notional Solvency Capital Requirements for ring fenced funds	R0420			
Total amount of Notional Solvency Capital Requirements for matching adjustment portfolios	R0430			
Diversification effects due to RFF nSCR aggregation for article 304	R0440			
Calculation of Solvency Capital Requirement				
			Yes/No	
			C0109	
Approach based on average tax rate*	R0590			2
Calculation of loss absorbing capacity of deferred taxes				
			Before the shock	After the shock
			C0110	C0120
DTA	R0600			1,226,360
DTA carry forward	R0610			1,226,360
DTA due to deductible temporary differences	R0620			
DTL	R0630			
			LAC DT	
			C0130	
LAC DT	R0640	-	1,226,360	
LAC DT justified by reversion of deferred tax liabilities	R0650			
LAC DT justified by reference to probable future taxable economic profit	R0660	-	1,226,360	
LAC DT justified by carry back, current year	R0670			
LAC DT justified by carry back, future years	R0680			
Maximum LAC DT	R0690			

Annex I
S.28.01.01
Minimum Capital Requirement - Only life or only non-life insurance or reinsurance activity
Linear formula component for non-life insurance and reinsurance obligations

	C0010		
MCR _{NL} Result	R0010	3,604,921	
			Net (of reinsurance/SPV) best estimate and TP calculated as a whole
			C0020
			Net (of reinsurance) written premiums in the last 12 months
			C0030
Medical expense insurance and proportional reinsurance	R0020		
Income protection insurance and proportional reinsurance	R0030		
Workers' compensation insurance and proportional reinsurance	R0040		
Motor vehicle liability insurance and proportional reinsurance	R0050	18,943,031	17,700,683
Other motor insurance and proportional reinsurance	R0060	1,348,555	3,063,439
Marine, aviation and transport insurance and proportional reinsurance	R0070		
Fire and other damage to property insurance and proportional reinsurance	R0080		
General liability insurance and proportional reinsurance	R0090		
Credit and suretyship insurance and proportional reinsurance	R0100		
Legal expenses insurance and proportional reinsurance	R0110		
Assistance and proportional reinsurance	R0120		
Miscellaneous financial loss insurance and proportional reinsurance	R0130		
Non-proportional health reinsurance	R0140		
Non-proportional casualty reinsurance	R0150		
Non-proportional marine, aviation and transport reinsurance	R0160		
Non-proportional property reinsurance	R0170		

Linear formula component for life insurance and reinsurance obligations

	C0040		
MCR _L Result	R0200	161	
			Net (of reinsurance/SPV) best estimate and TP calculated as a whole
			C0050
			Net (of reinsurance/SPV) total capital at risk
			C0060
Obligations with profit participation - guaranteed benefits	R0210		
Obligations with profit participation - future discretionary benefits	R0220		
Index-linked and unit-linked insurance obligations	R0230		
Other life (re)insurance and health (re)insurance obligations	R0240	7,674.20	
Total capital at risk for all life (re)insurance obligations	R0250		

Overall MCR calculation

	C0070
Linear MCR	R0300 3,605,083
SCR	R0310 9,202,254
MCR cap	R0320 4,141,014
MCR floor	R0330 2,300,563
Combined MCR	R0340 3,605,083
Absolute floor of the MCR	R0350 3,121,801
	C0070
Minimum Capital Requirement	R0400 3,605,083